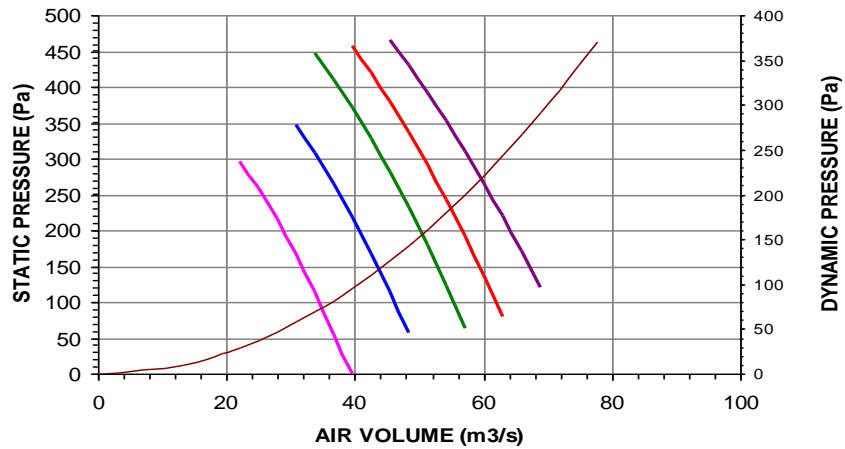
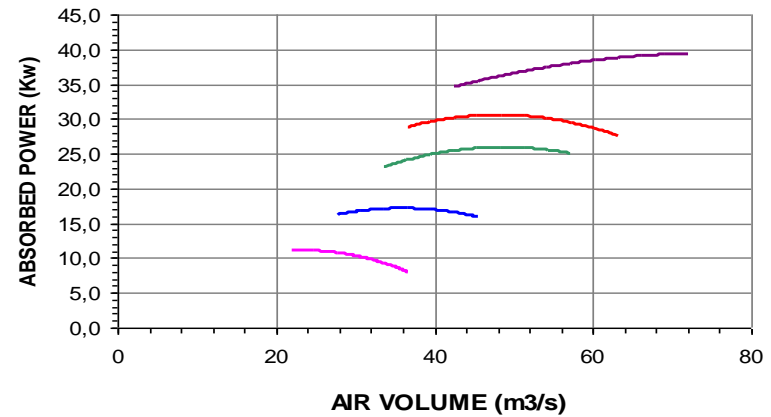


AF24-2000-5 RPM 720 20 °C

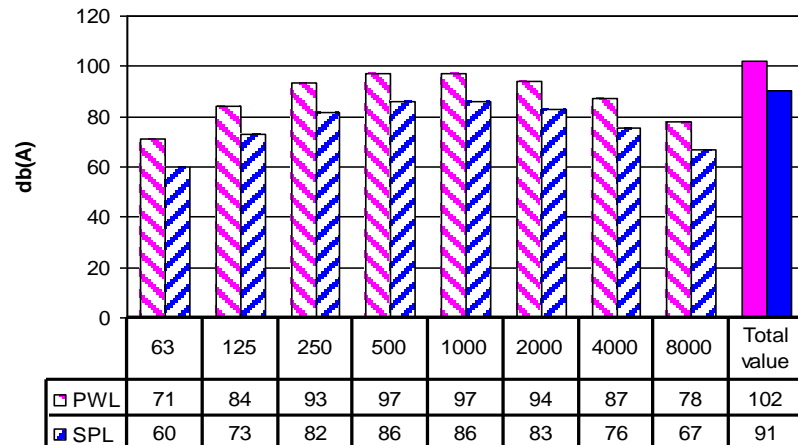


10° 15° 20° 25° 30° pdin

AF24-2000-5 RPM 720 20 °C

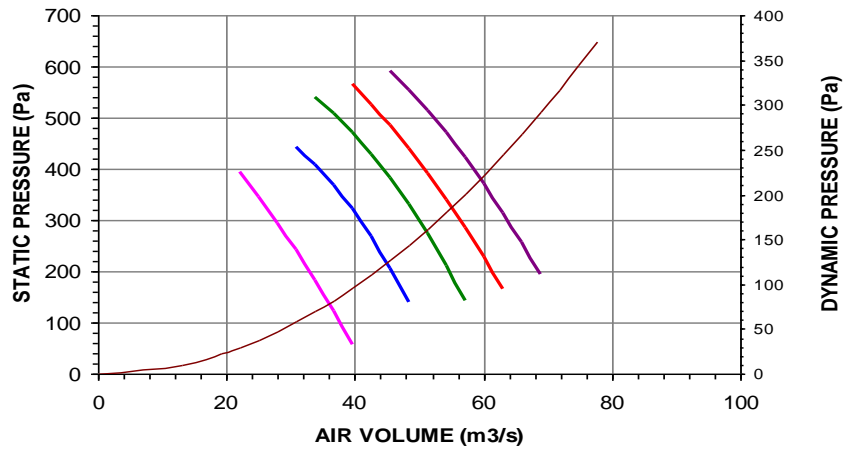


AF24-2000-5 RPM 720 20 °C



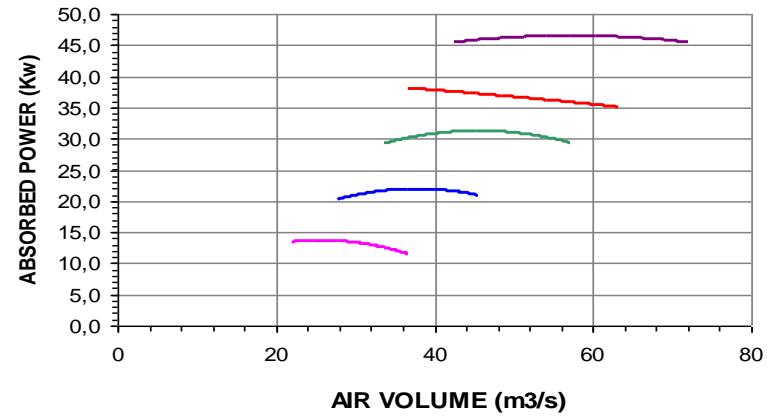
Noise spectrum referring to max efficiency of 20° curve
Variation of +/- 3 db(A) on total range of performance

AF24-2000-6 RPM 720 20 °C

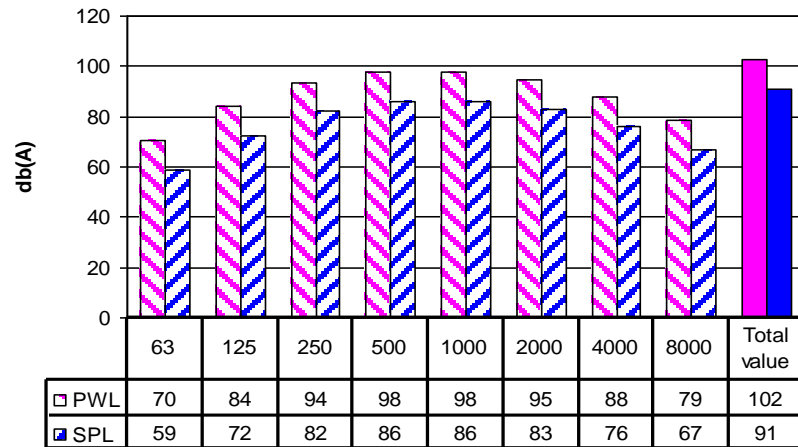


10° 15° 20° 25° 30° pdin

AF24-2000-6 RPM 720 20 °C

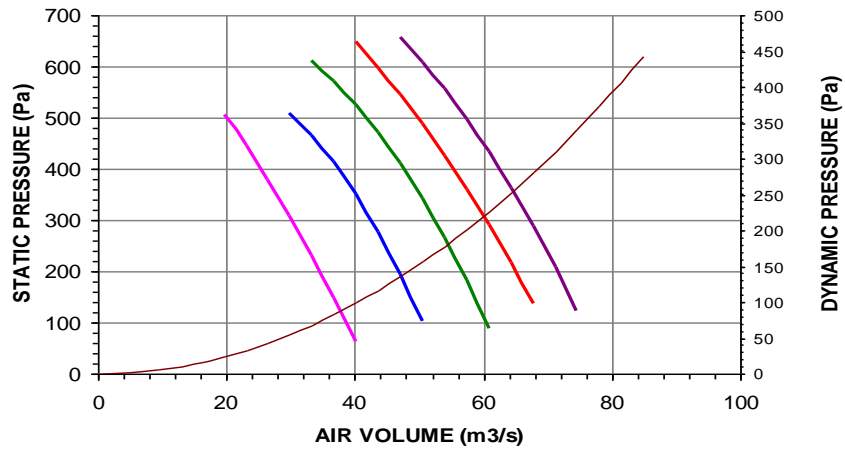


AF24-2000-6 RPM 720 20 °C



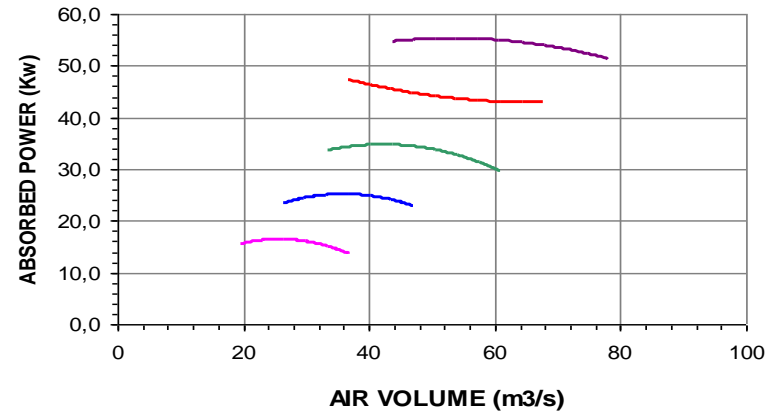
Noise spectrum referring to max efficiency of 20° curve
Variation of +/- 3 db(A) on total range of performance

AF24-2000-7 RPM 720 20 °C

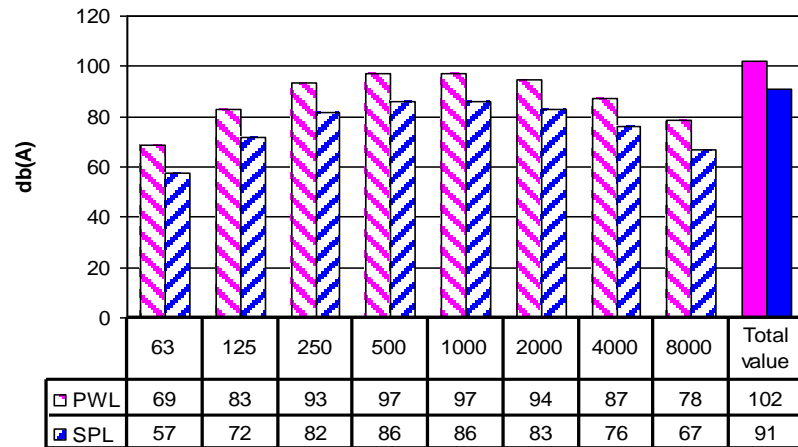


10° 15° 20° 25° 30° pdin

AF24-2000-7 RPM 720 20 °C

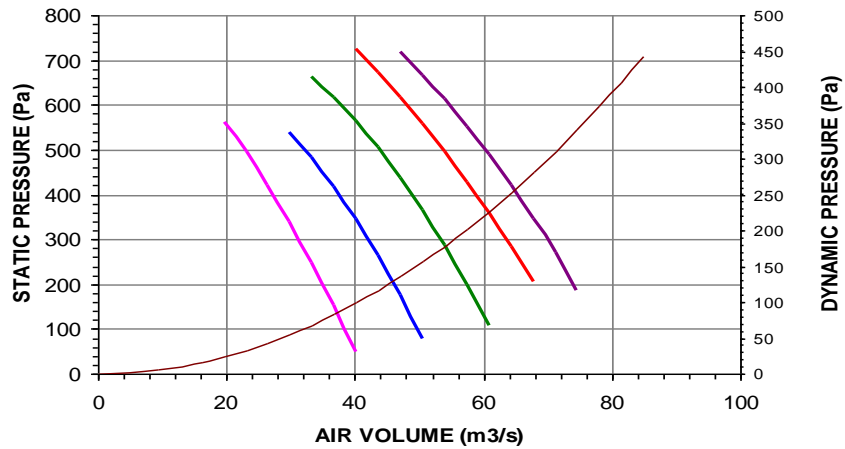


AF24-2000-7 RPM 720 20 °C



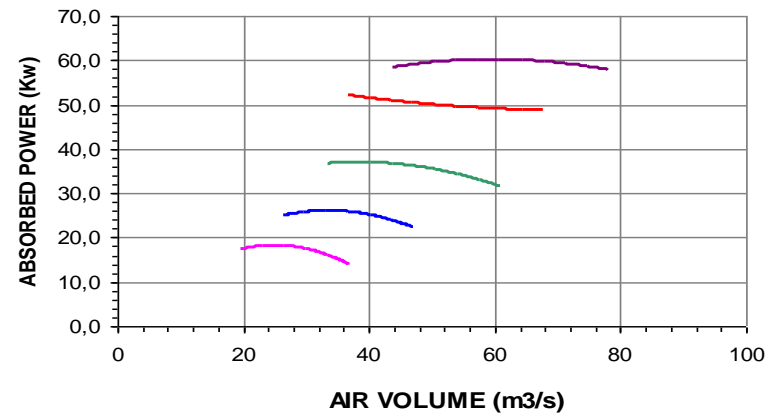
Noise spectrum referring to max efficiency of 20° curve
Variation of +/- 3 db(A) on total range of performance

AF24-2000-8 RPM 720 20 °C

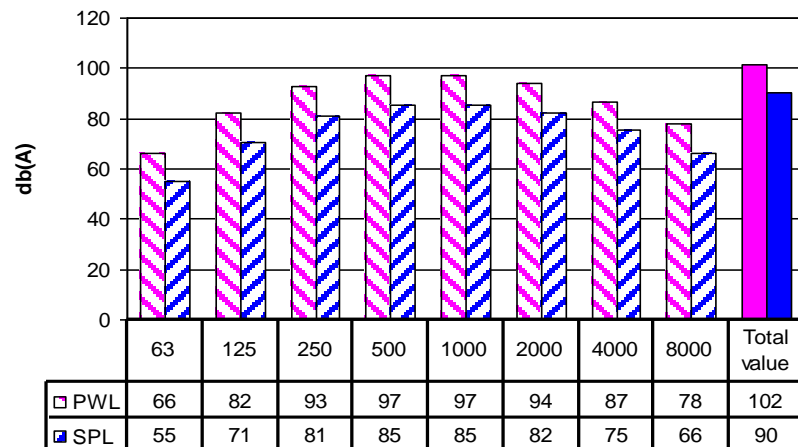


10° 15° 20° 25° 30° pdin

AF24-2000-8 RPM 720 20 °C

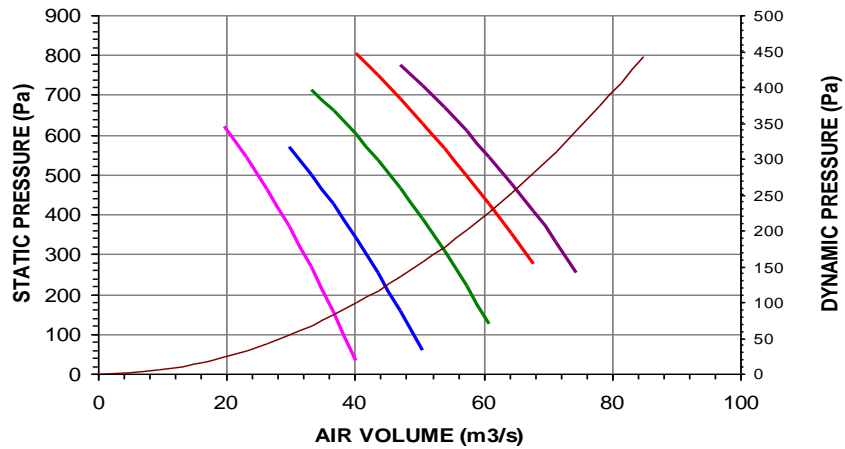


AF24-2000-8 RPM 720 20 °C

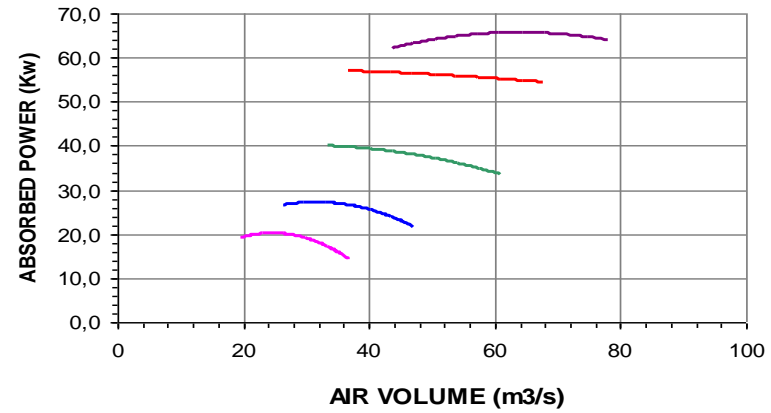


Noise spectrum referring to max efficiency of 20° curve
Variation of +/- 3 db(A) on total range of performance

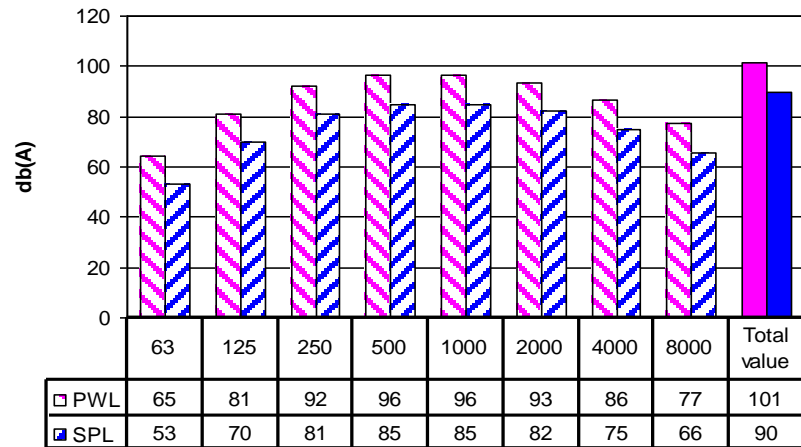
AF24-2000-9 RPM 720 20 °C



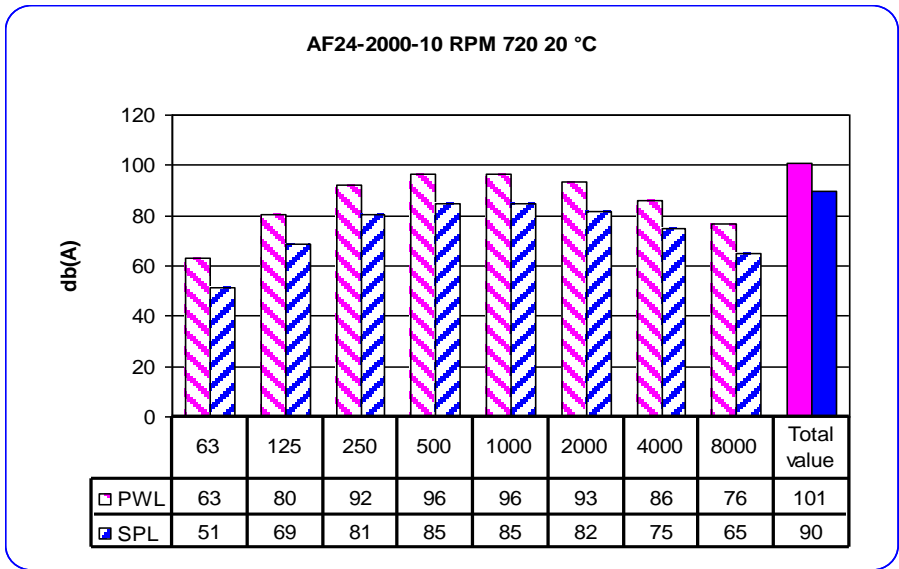
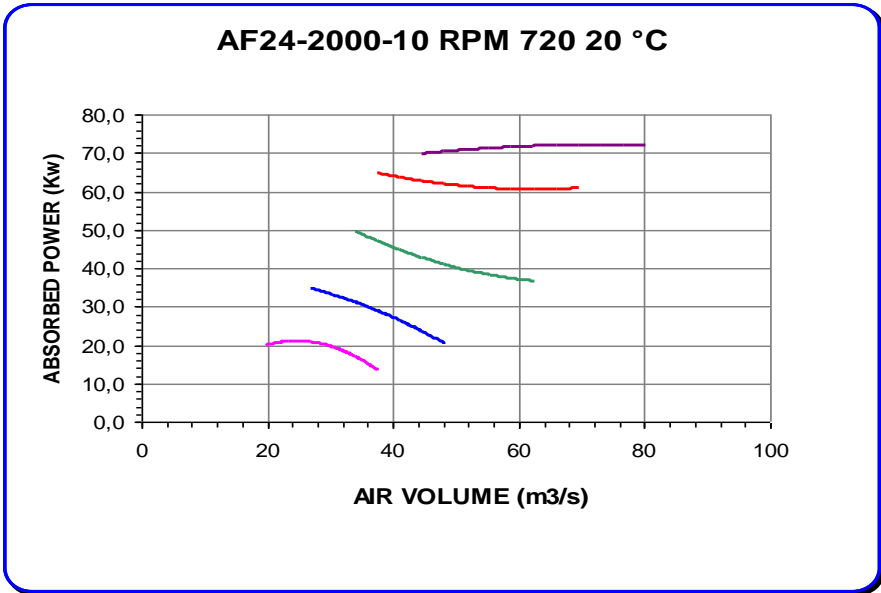
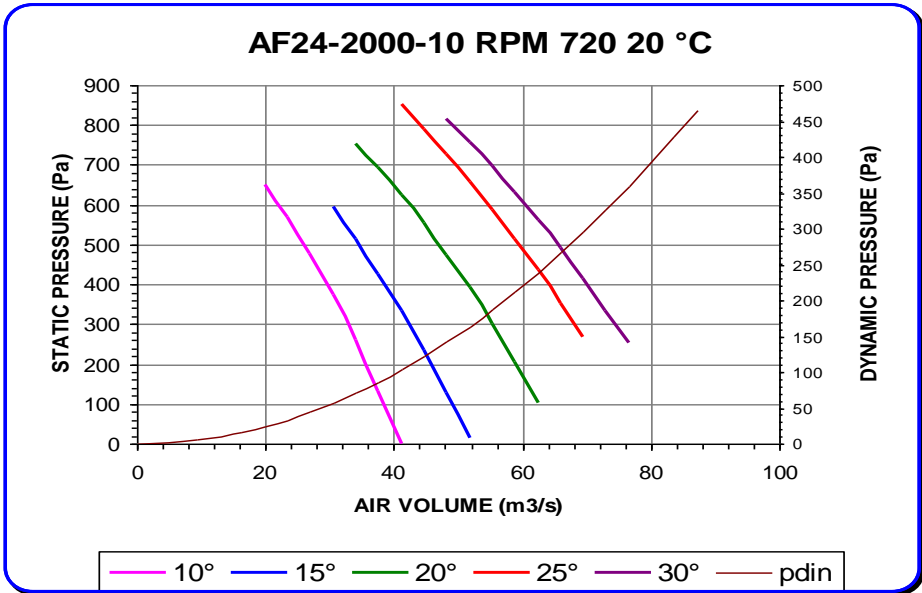
AF24-2000-9 RPM 720 20 °C



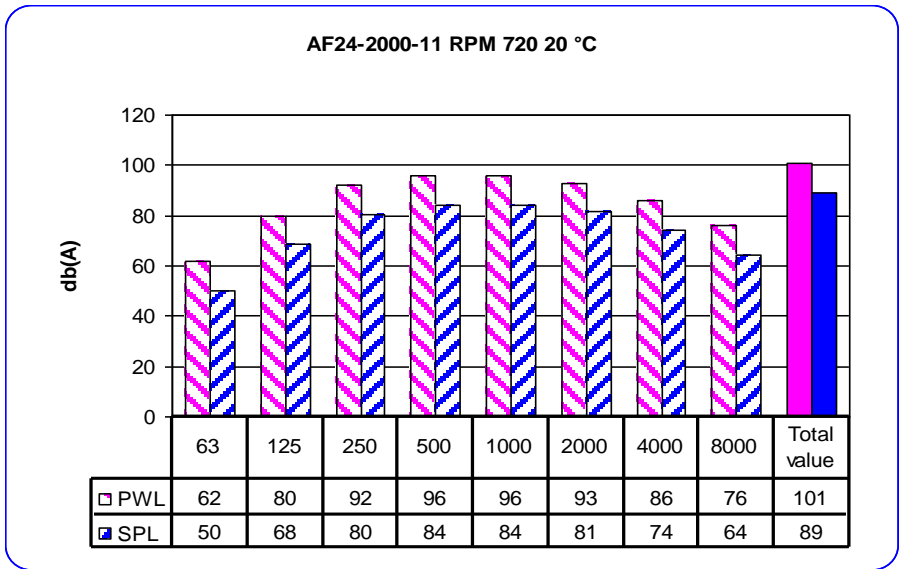
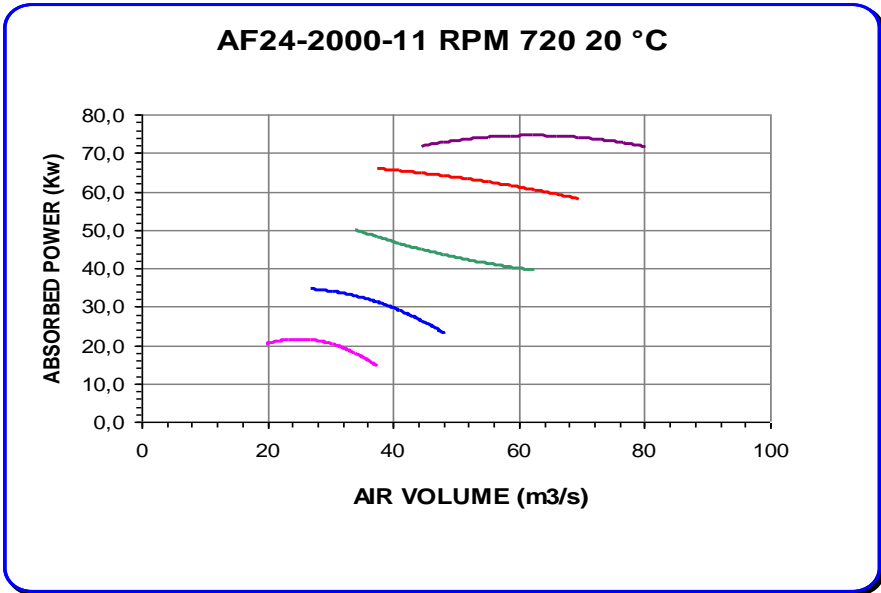
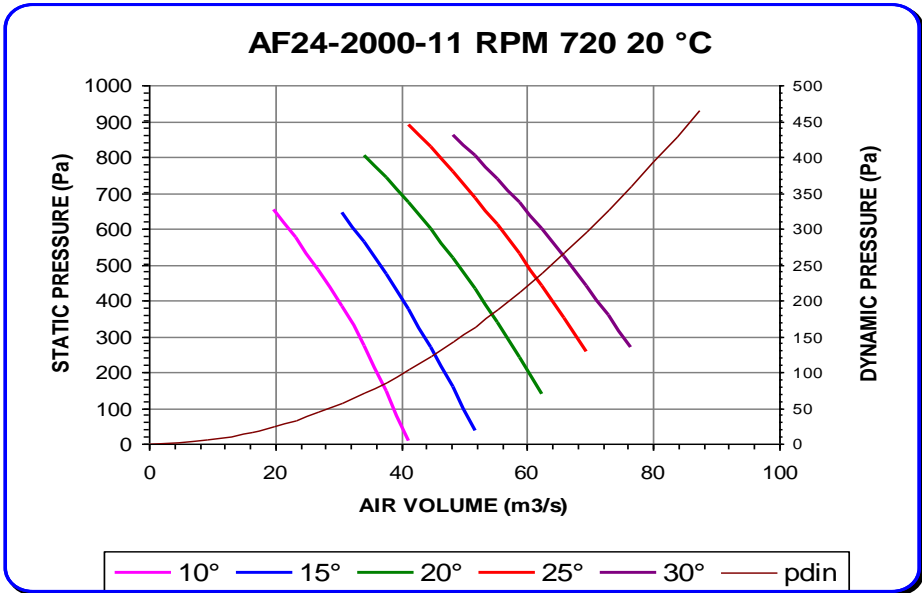
AF24-2000-9 RPM 720 20 °C



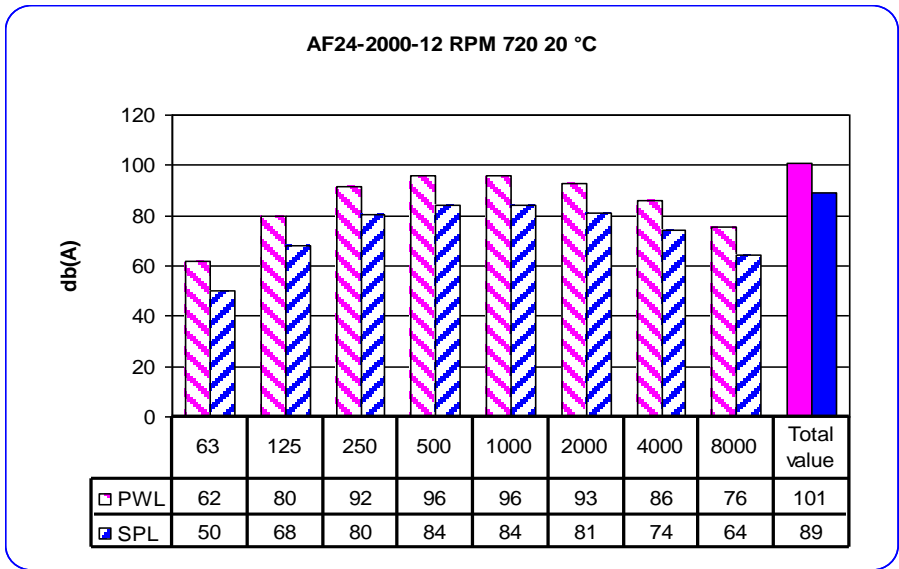
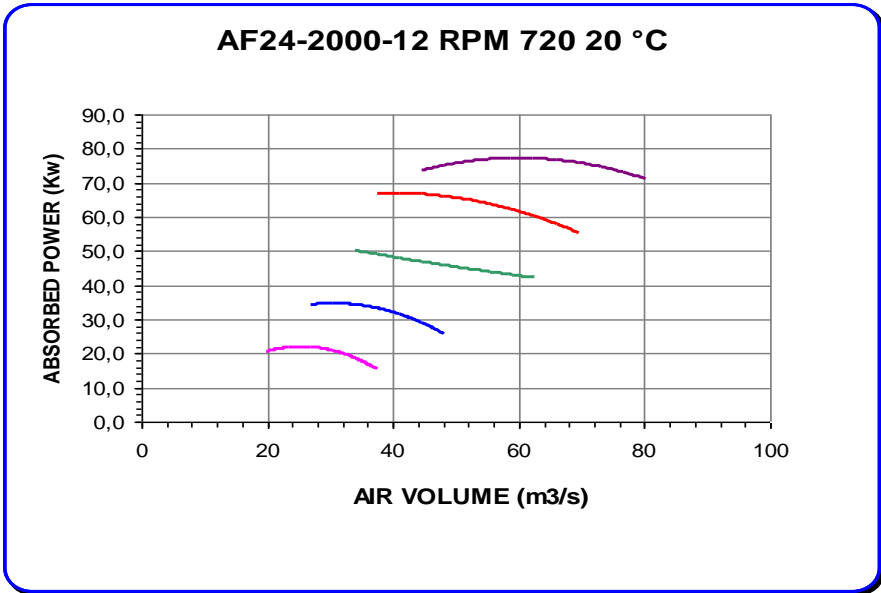
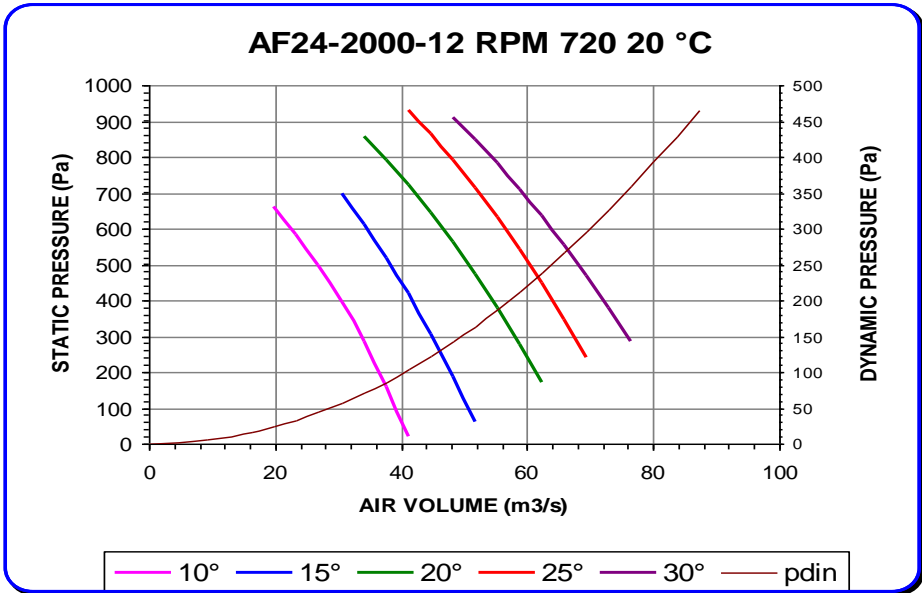
Noise spectrum referring to max efficiency of 20° curve
Variation of +/- 3 db(A) on total range of performance



Noise spectrum referring to max efficiency of 20° curve
 Variation of +/- 3 db(A) on total range of performance



Noise spectrum referring to max efficiency of 20° curve
 Variation of +/- 3 db(A) on total range of performance



Noise spectrum referring to max efficiency of 20° curve
 Variation of +/- 3 db(A) on total range of performance