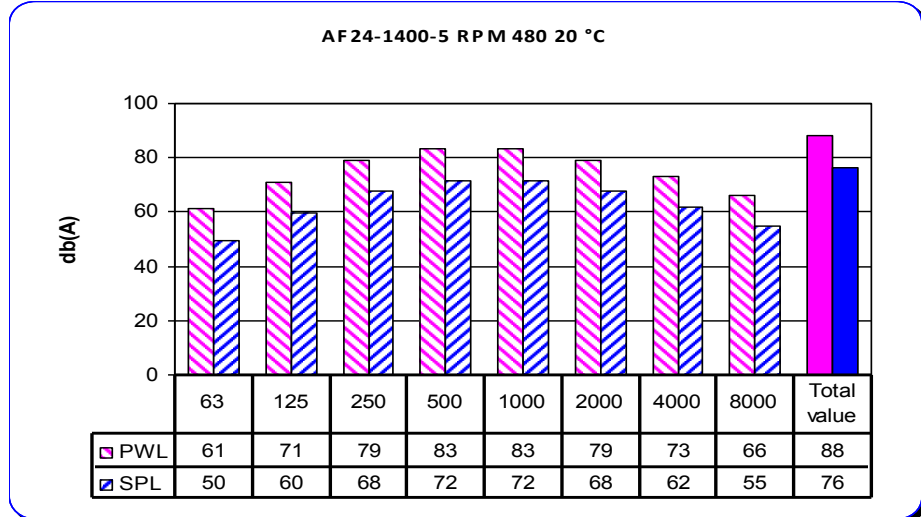
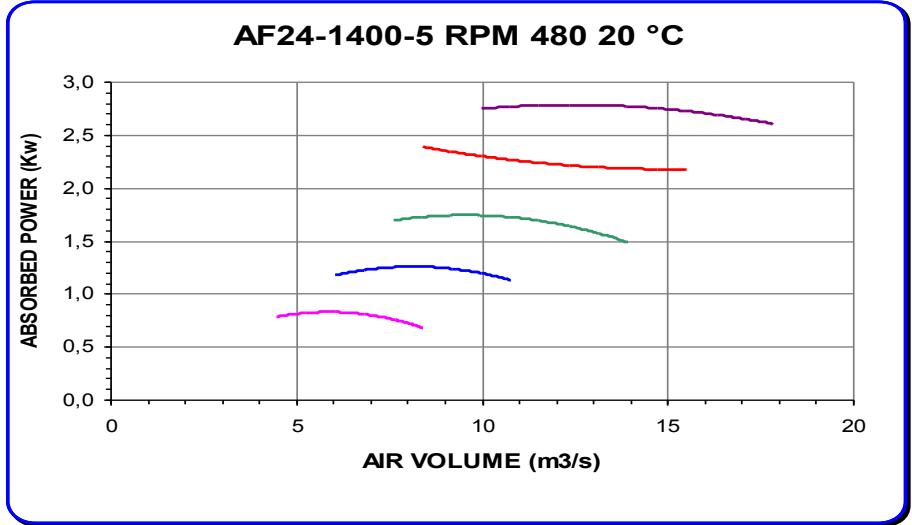
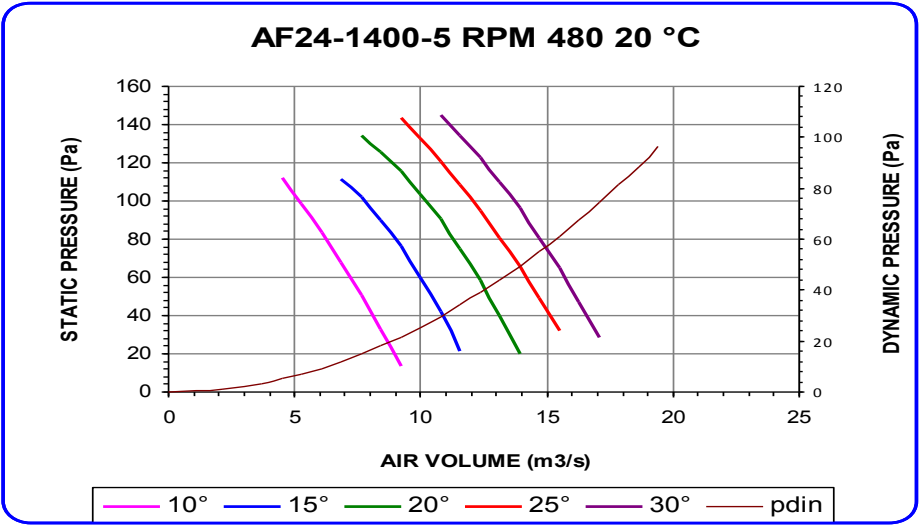
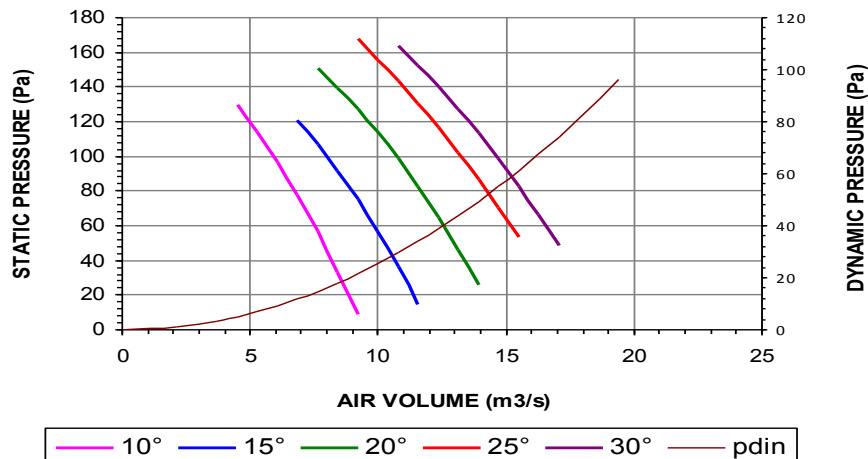


Noise spectrum referring to max efficiency of 20° curve
 Variation of +/- 3 db(A) on total range of performance

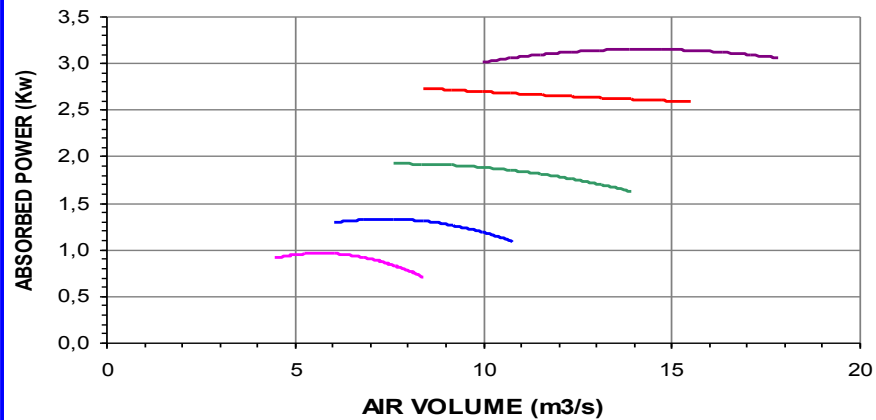


Noise spectrum referring to max efficiency of 20° curve
 Variation of +/- 3 db(A) on total range of performance

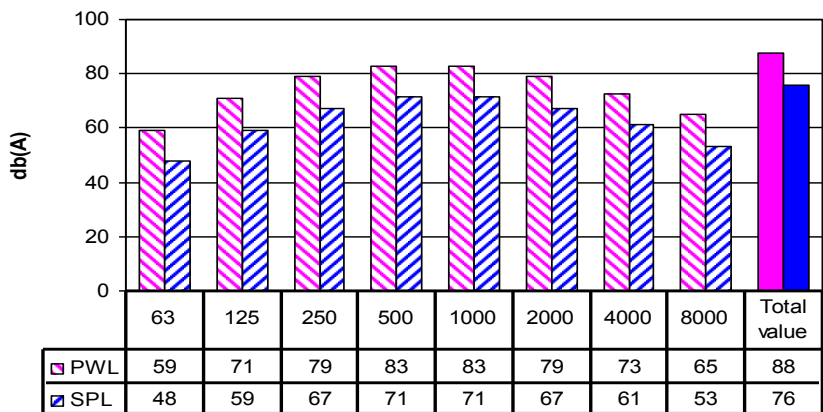
AF24-1400-6 RPM 480 20 °C



AF24-1400-6 RPM 480 20 °C

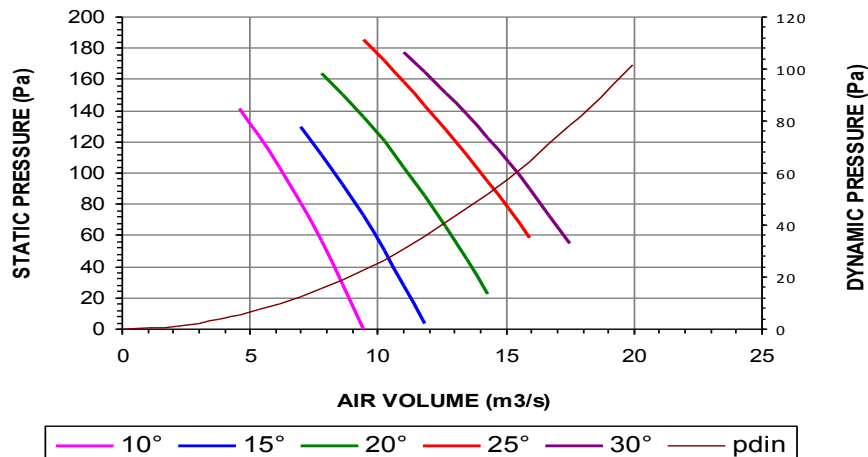


AF24-1400-6 RPM 480 20 °C

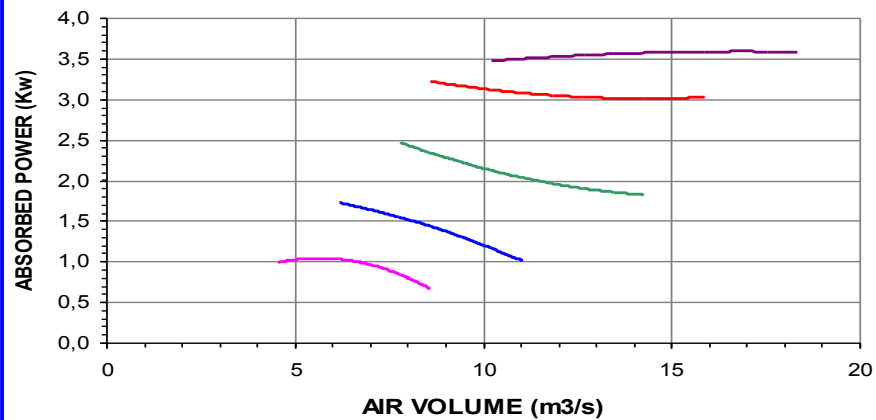


Noise spectrum referring to max efficiency of 20° curve
Variation of +/- 3 db(A) on total range of performance

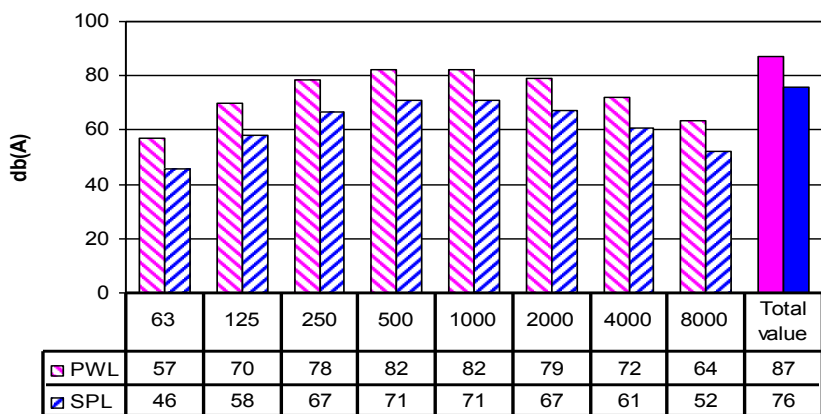
AF24-1400-7 RPM 480 20 °C



AF24-1400-7 RPM 480 20 °C

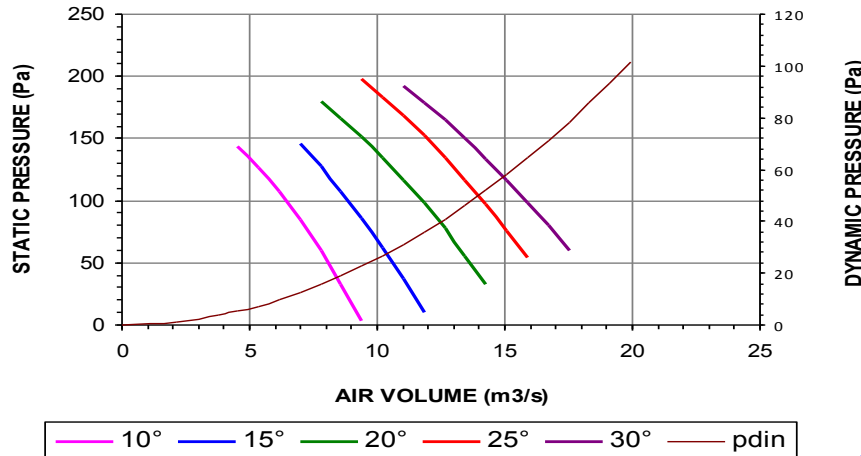


AF24-1400-7 RPM 480 20 °C

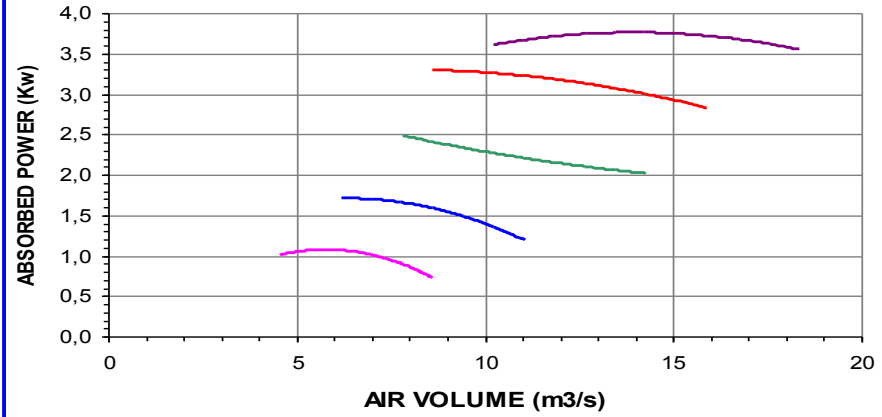


Noise spectrum referring to max efficiency of 20° curve
Variation of +/- 3 db(A) on total range of performance

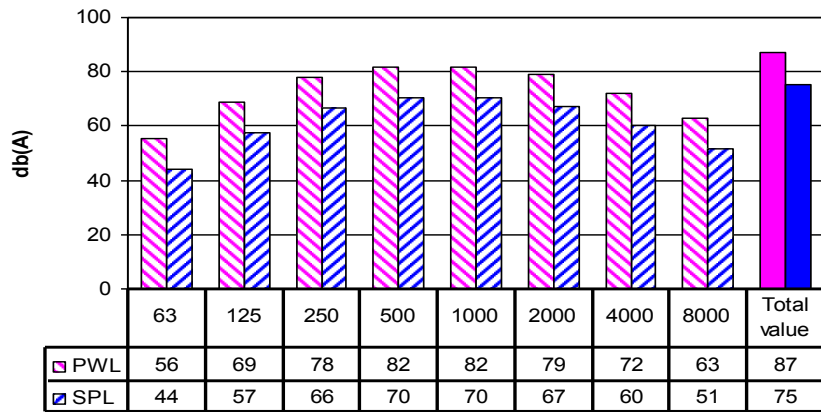
AF24-1400-8 RPM 480 20 °C



AF24-1400-8 RPM 480 20 °C



AF24-1400-8 RPM 480 20 °C



Noise spectrum referring to max efficiency of 20° curve
 Variation of +/- 3 db(A) on total range of performance