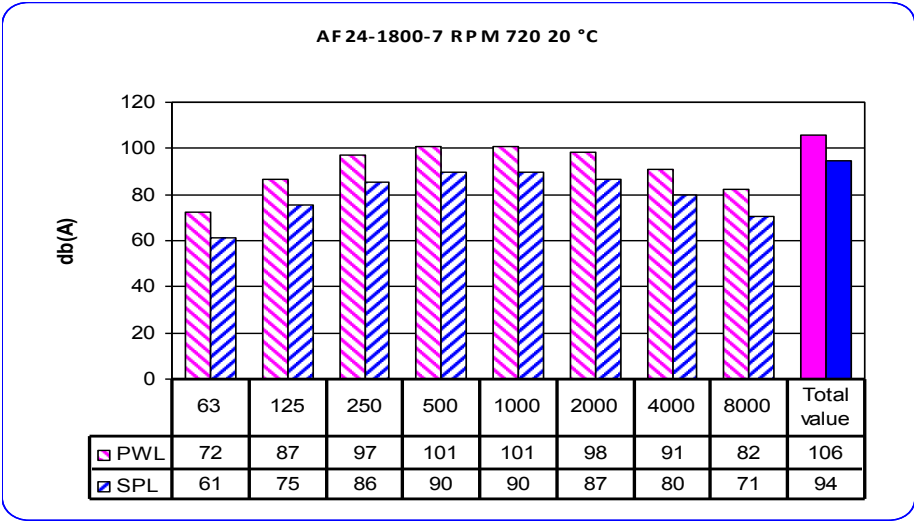
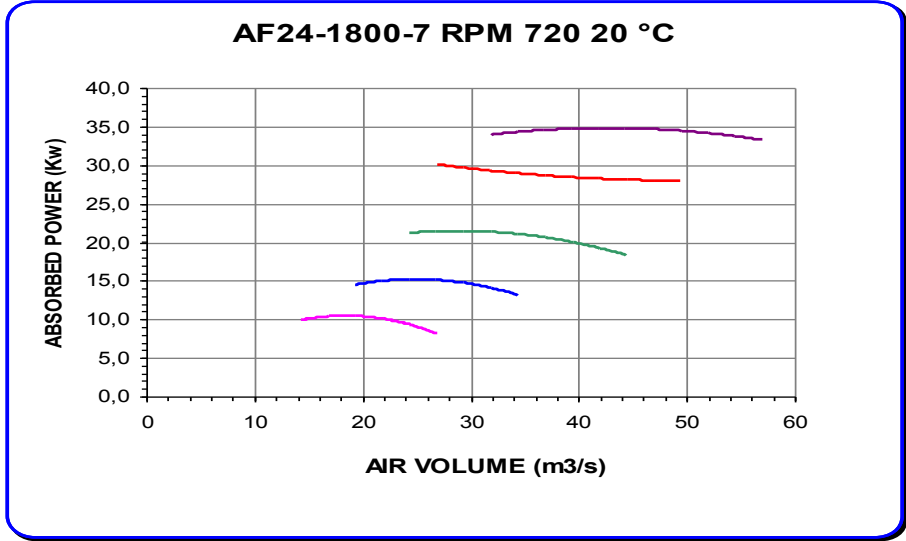
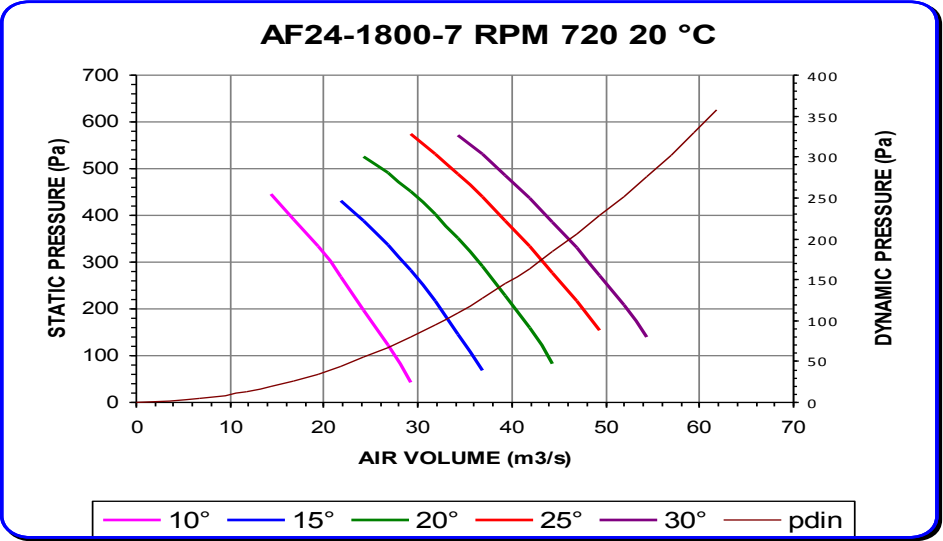
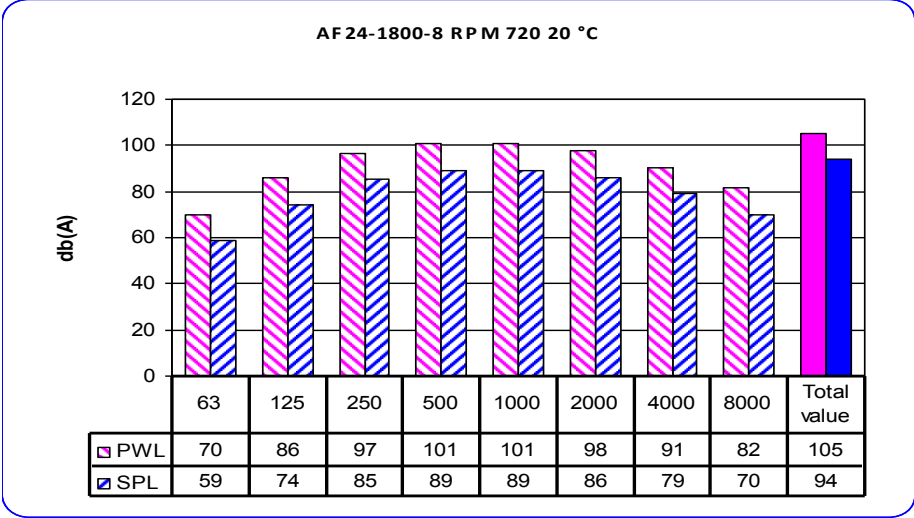
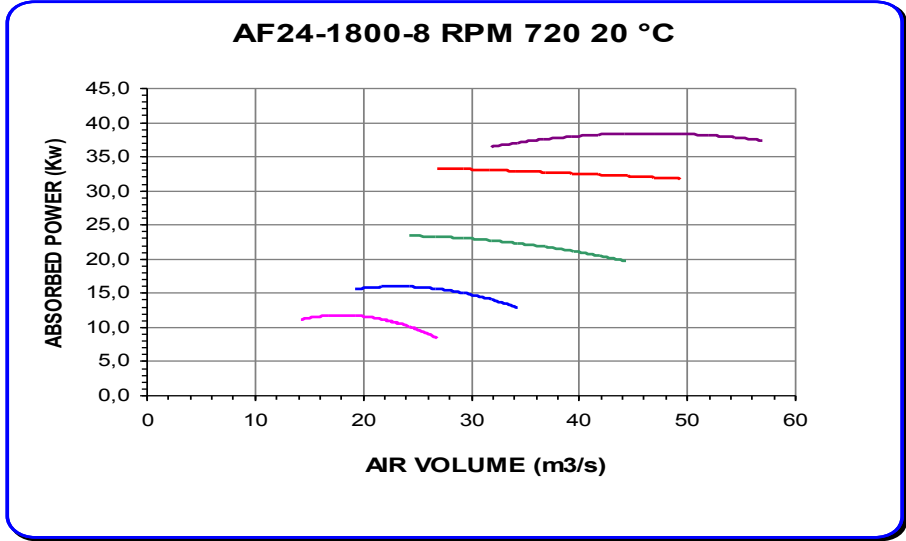
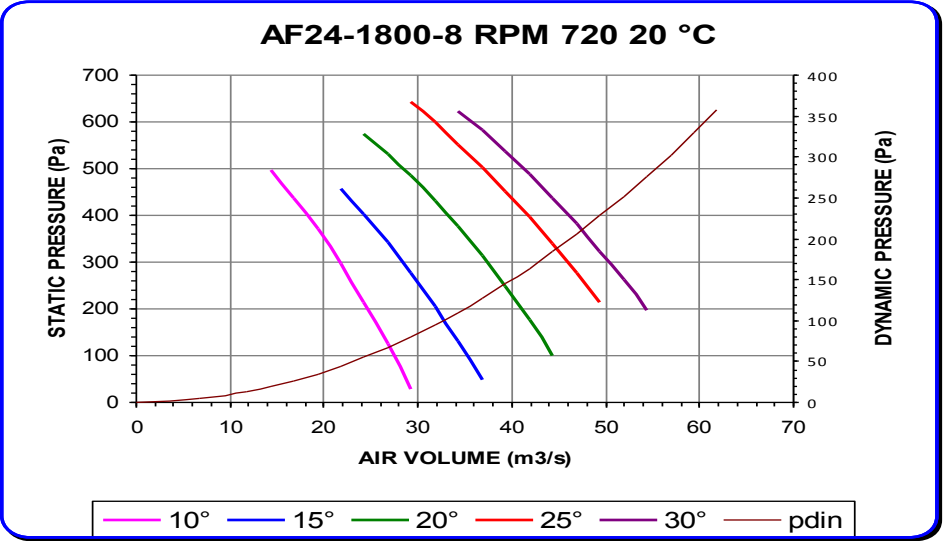


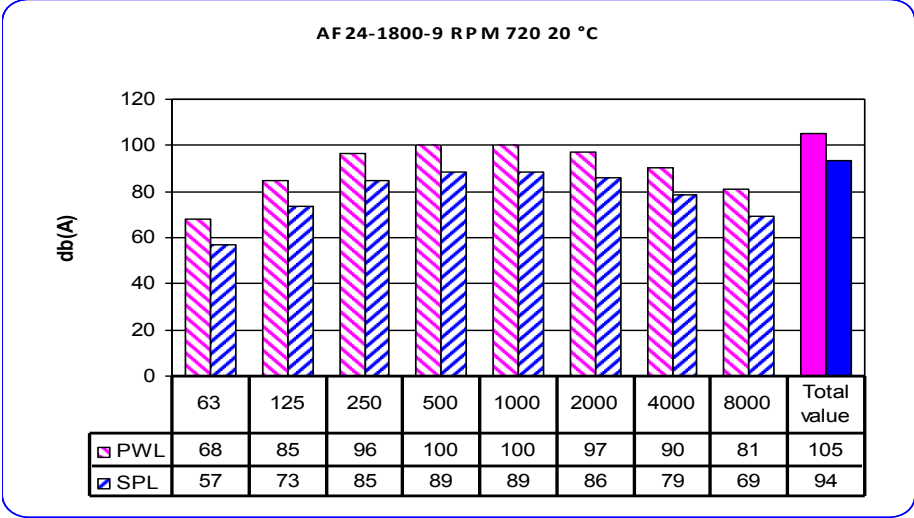
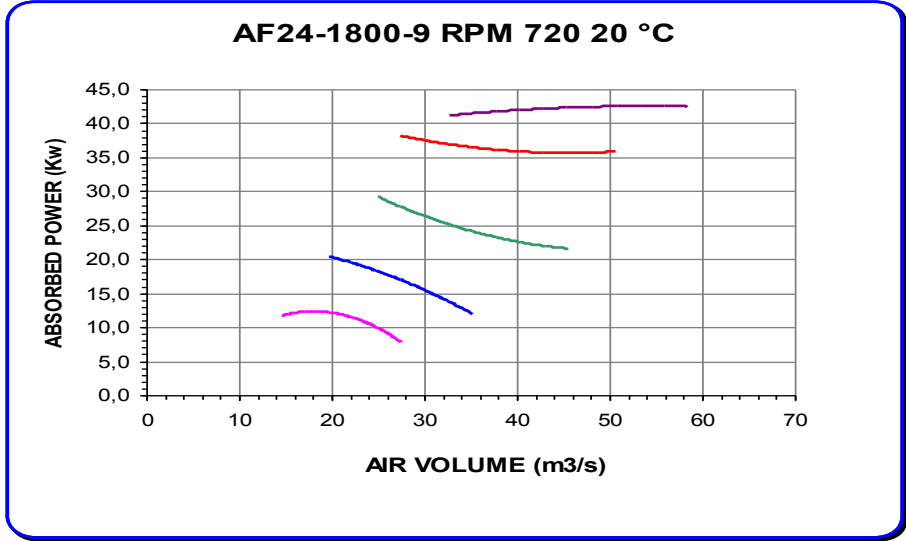
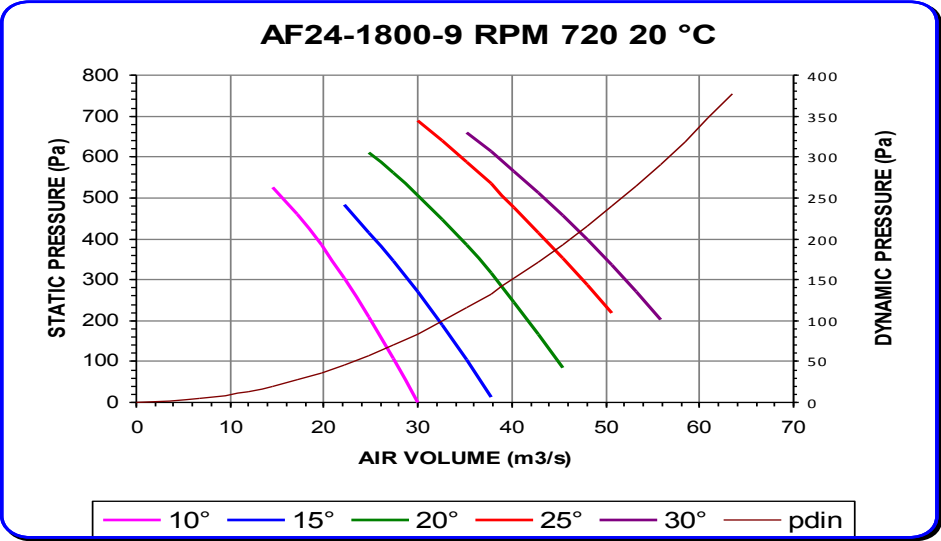
Noise spectrum referring to max efficiency of 20° curve
 Variation of +/- 3 db(A) on total range of performance



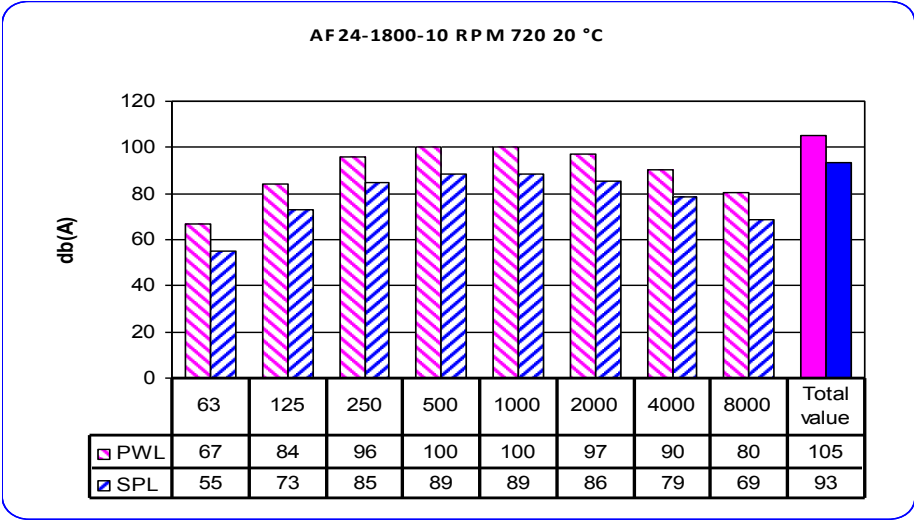
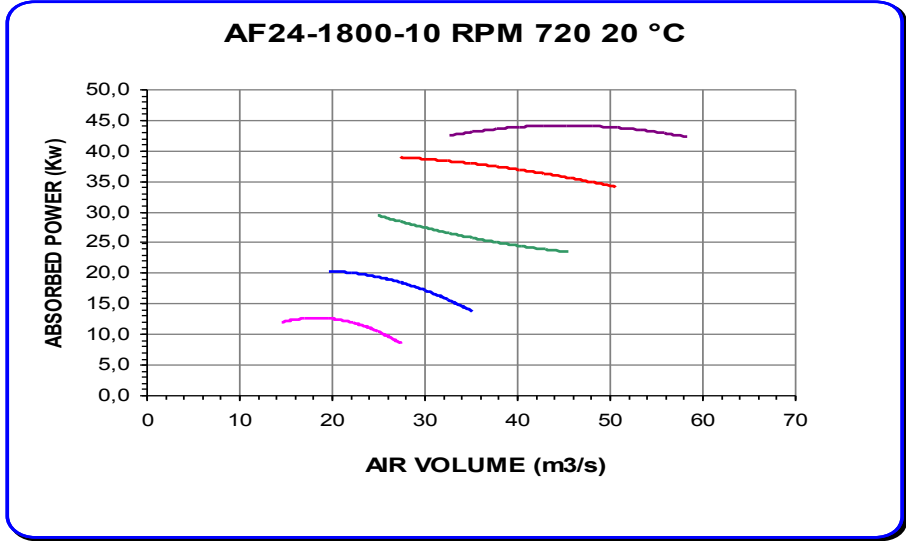
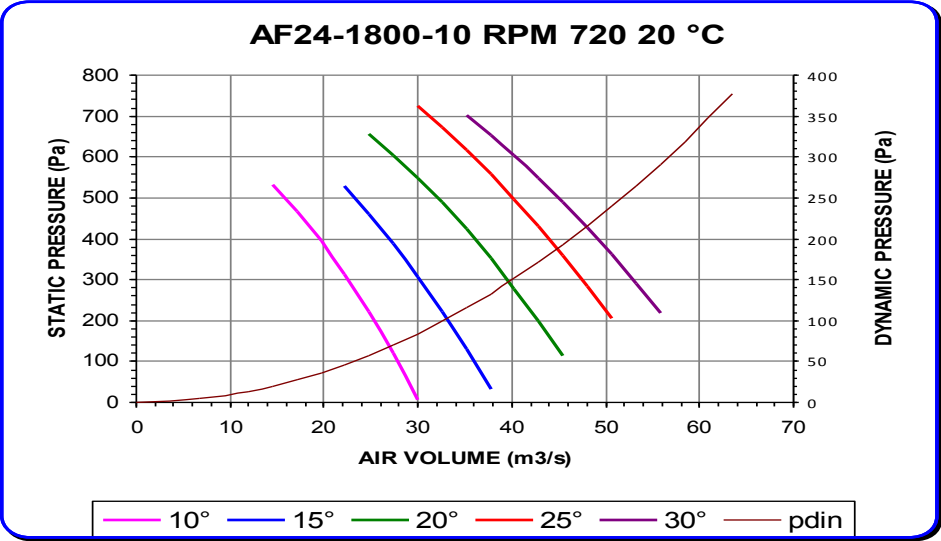
Noise spectrum referring to max efficiency of 20° curve
 Variation of +/- 3 db(A) on total range of performance



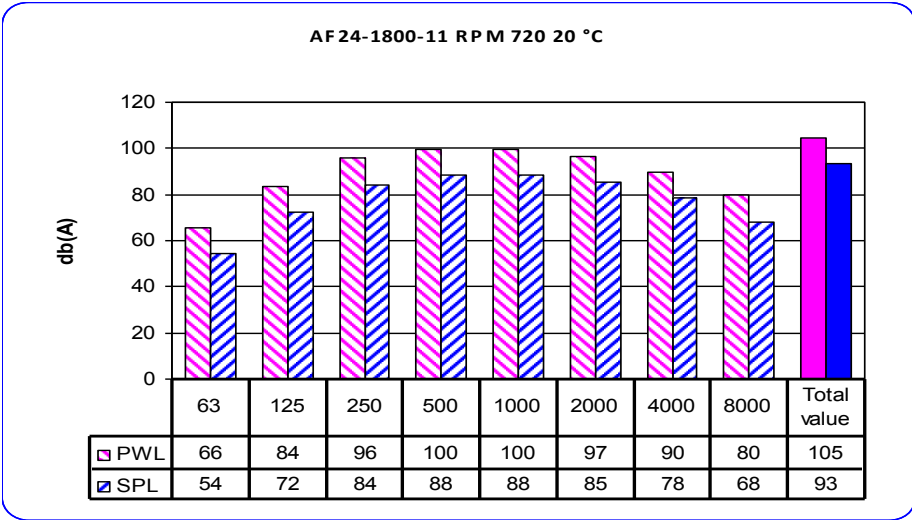
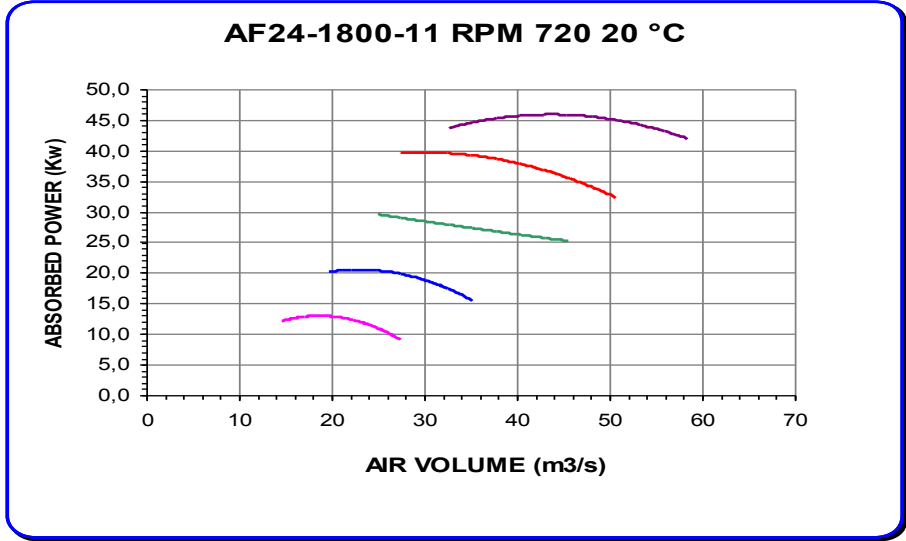
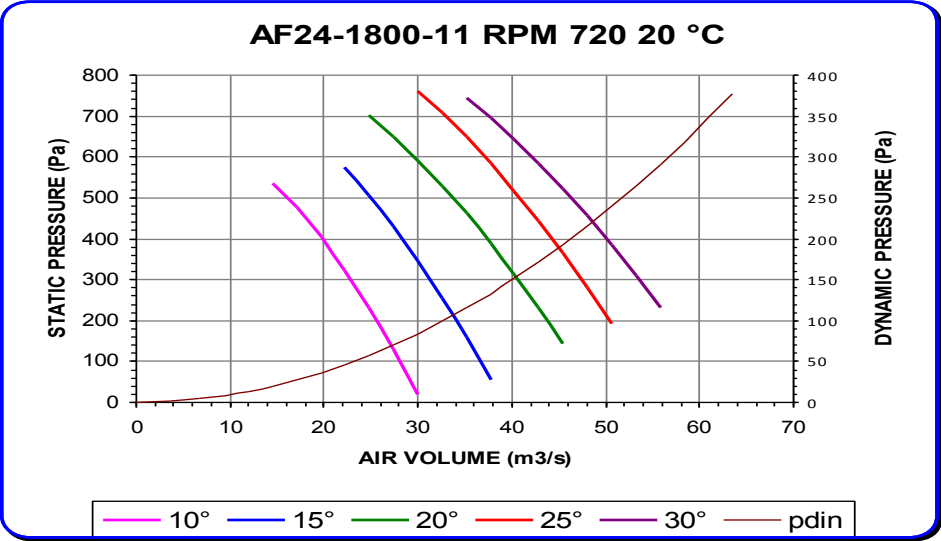
Noise spectrum referring to max efficiency of 20° curve
 Variation of +/- 3 db(A) on total range of performance



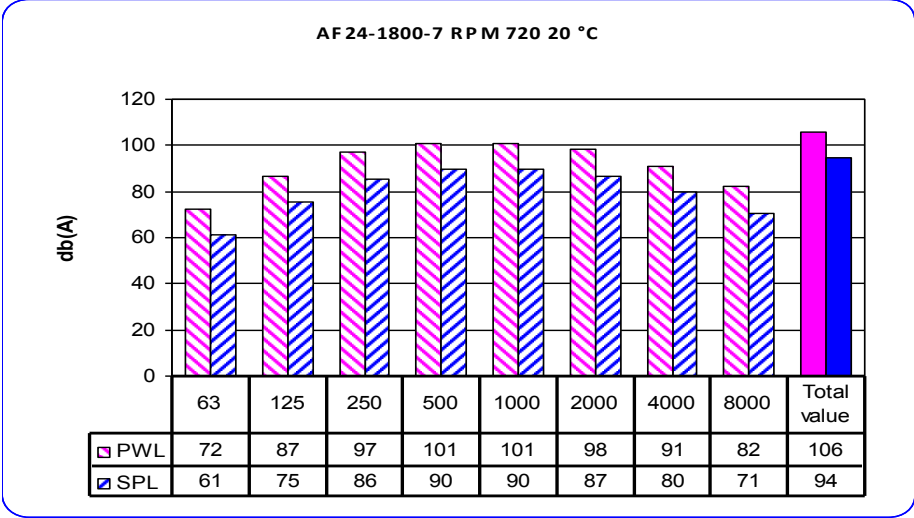
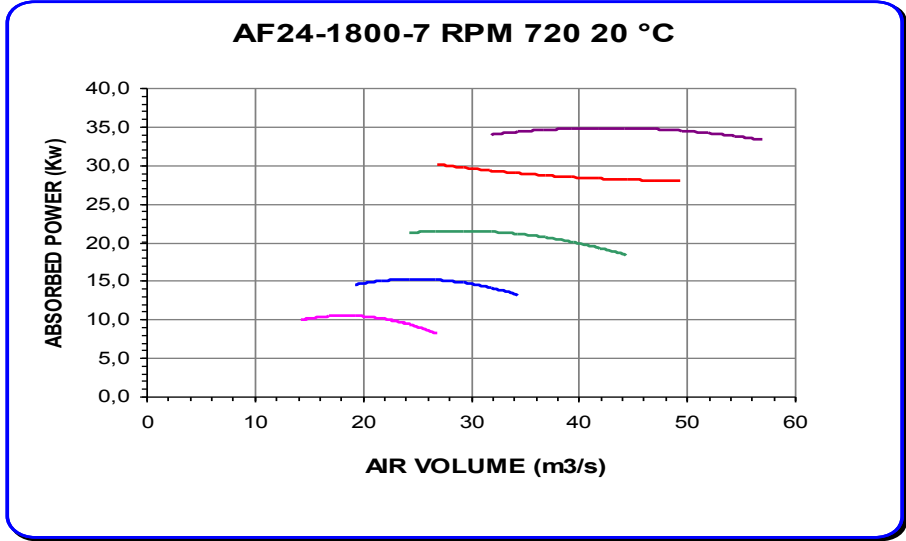
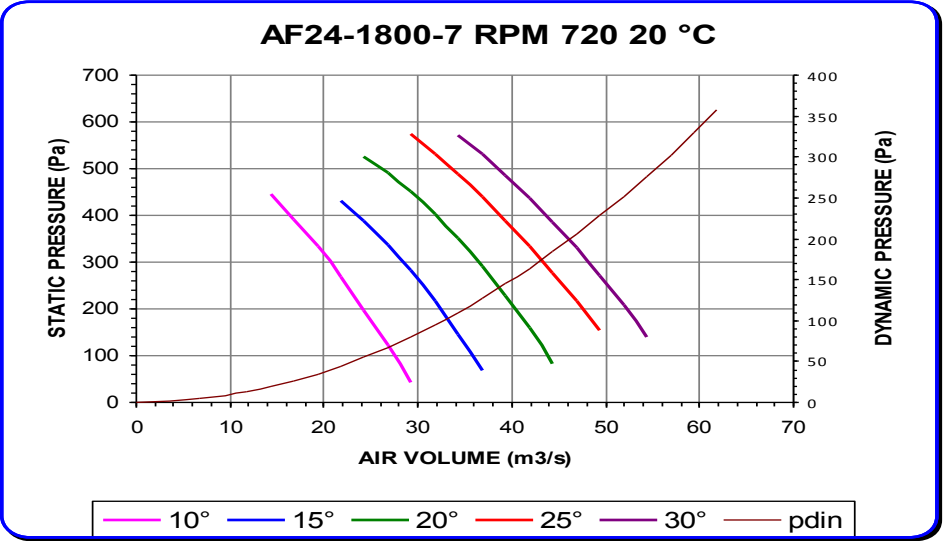
Noise spectrum referring to max efficiency of 20° curve
 Variation of +/- 3 db(A) on total range of performance



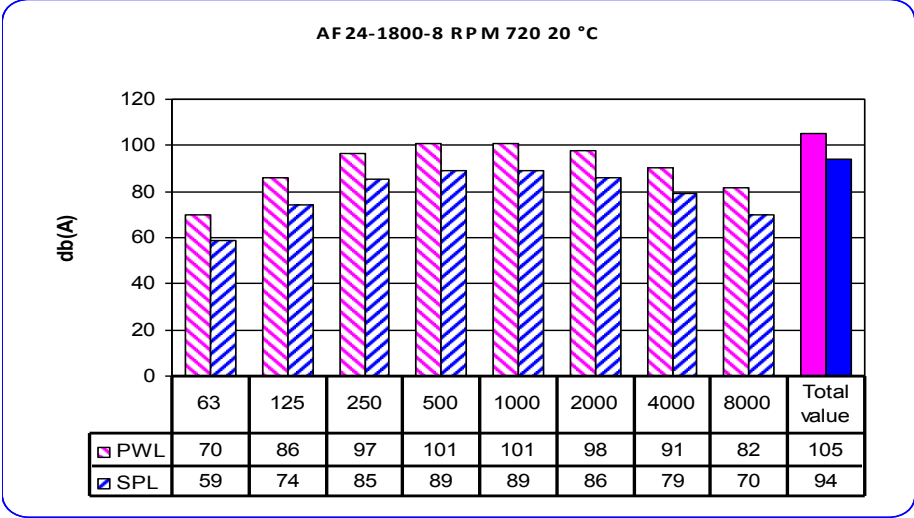
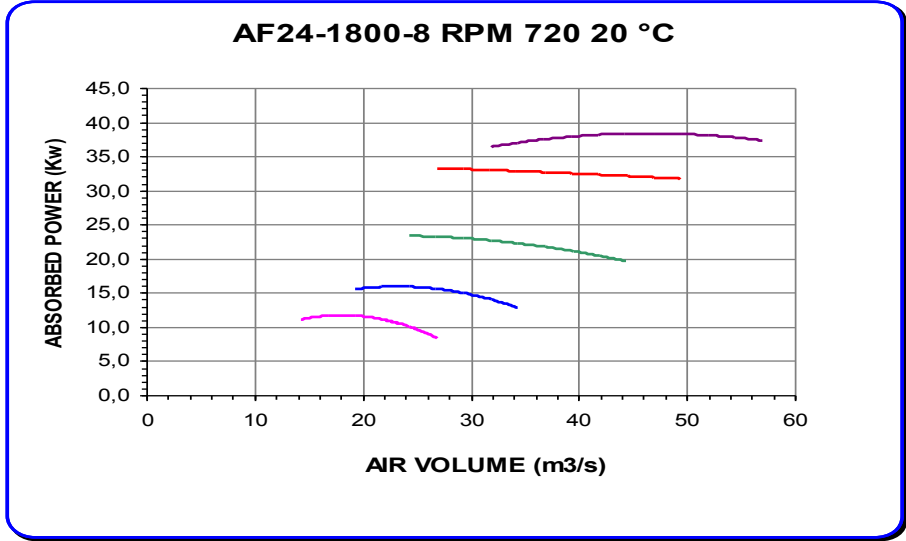
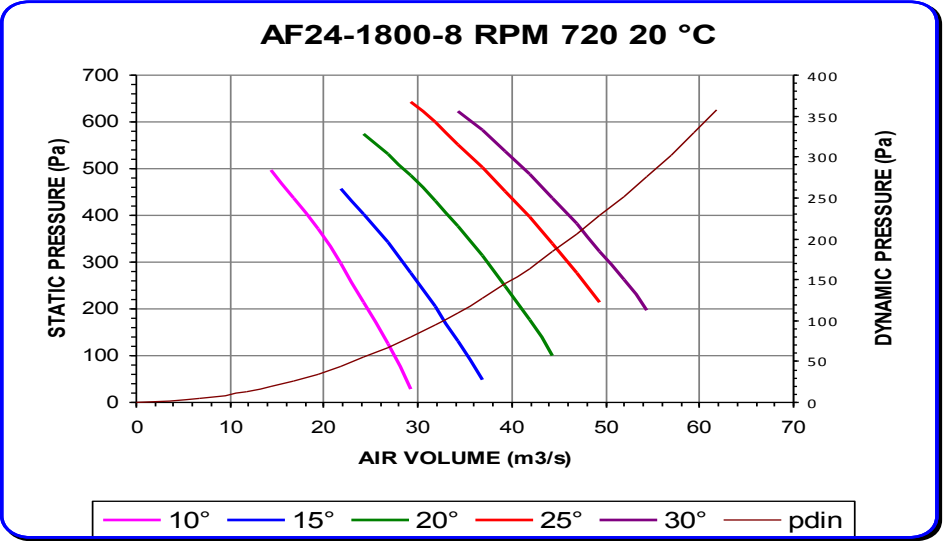
Noise spectrum referring to max efficiency of 20° curve
 Variation of +/- 3 db(A) on total range of performance



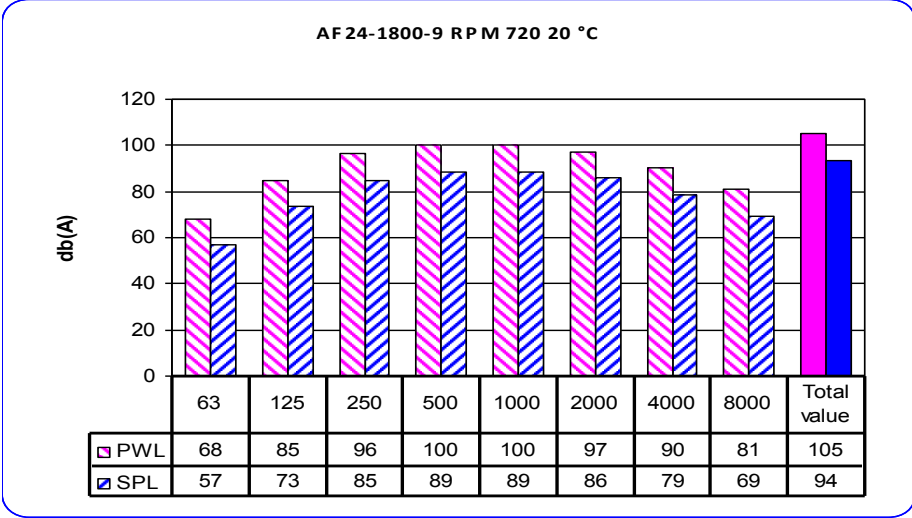
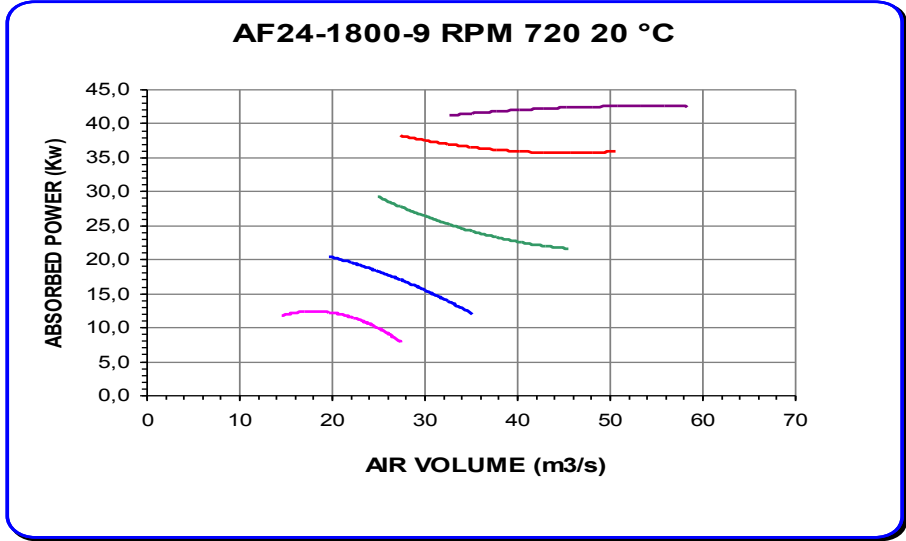
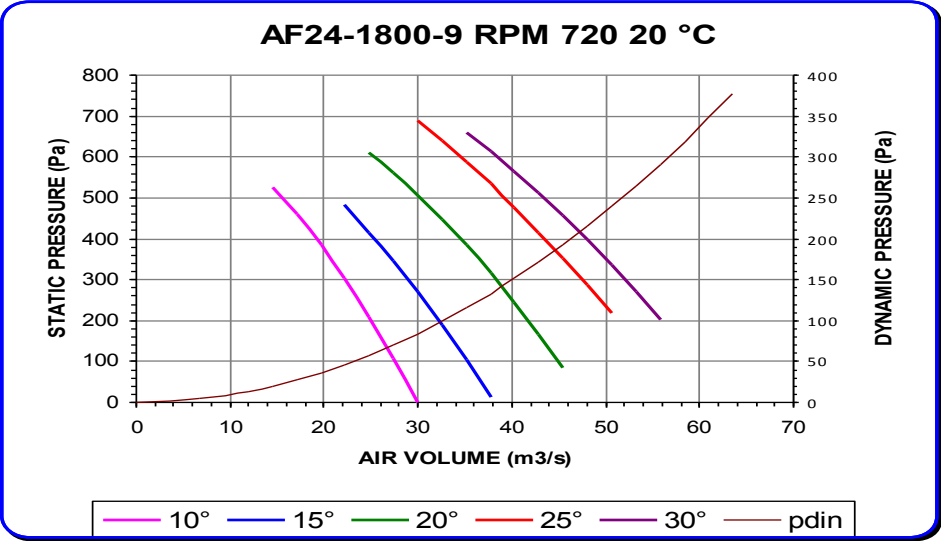
Noise spectrum referring to max efficiency of 20° curve
 Variation of +/- 3 db(A) on total range of performance



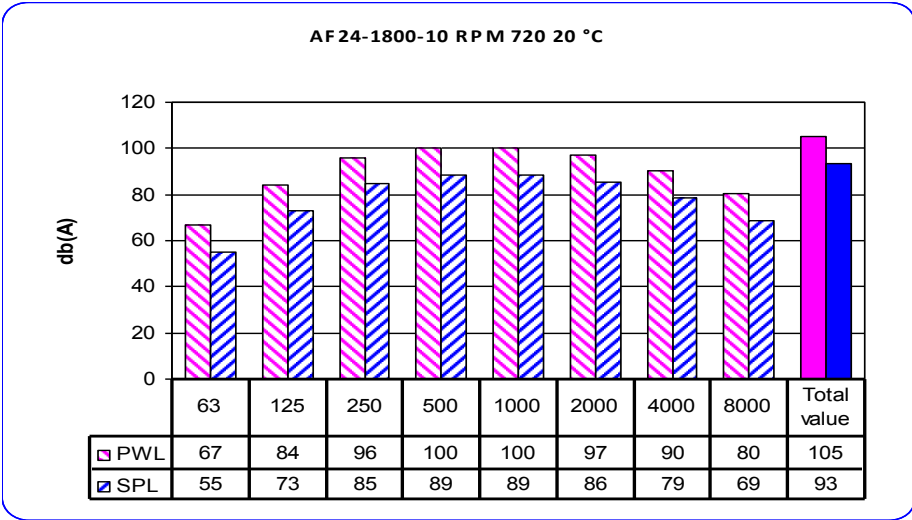
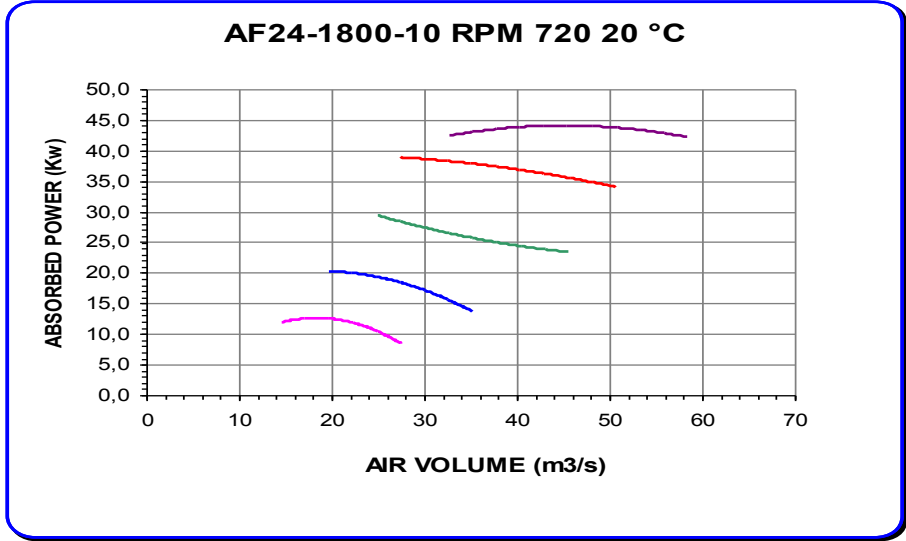
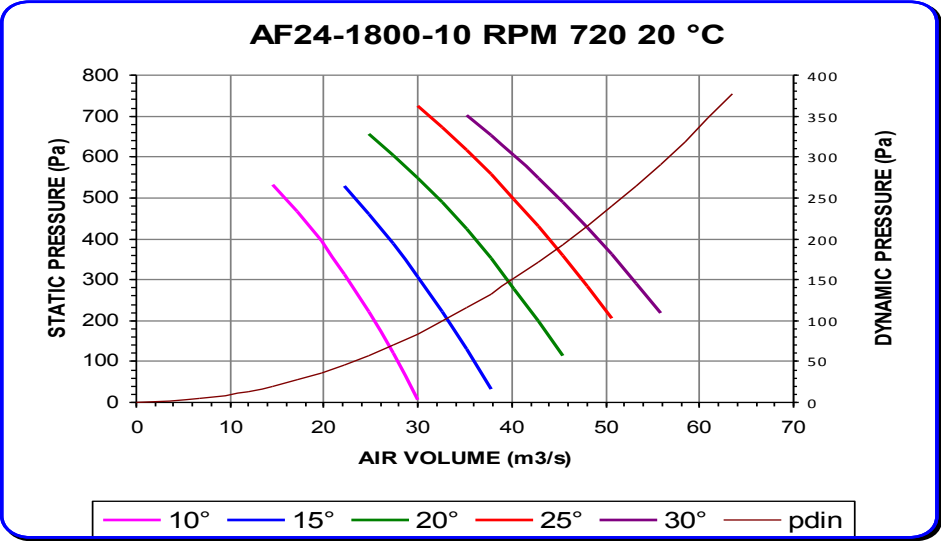
Noise spectrum referring to max efficiency of 20° curve
 Variation of +/- 3 db(A) on total range of performance



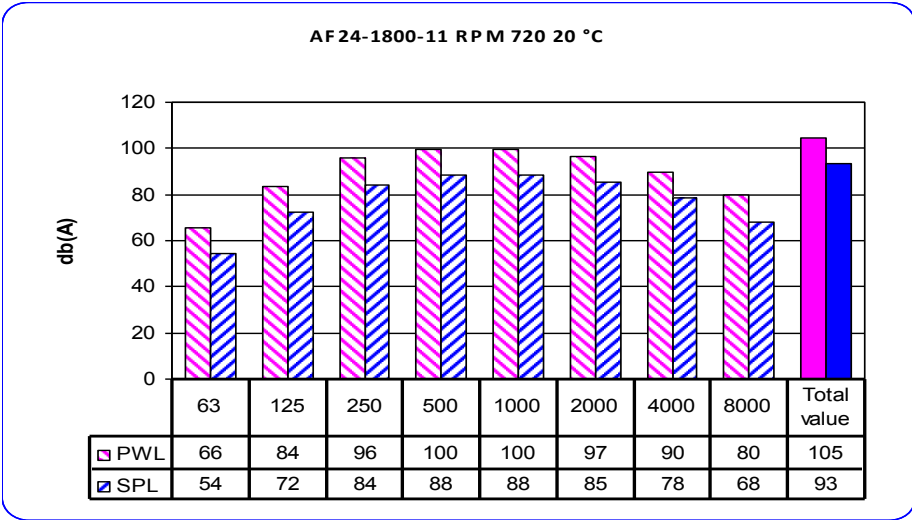
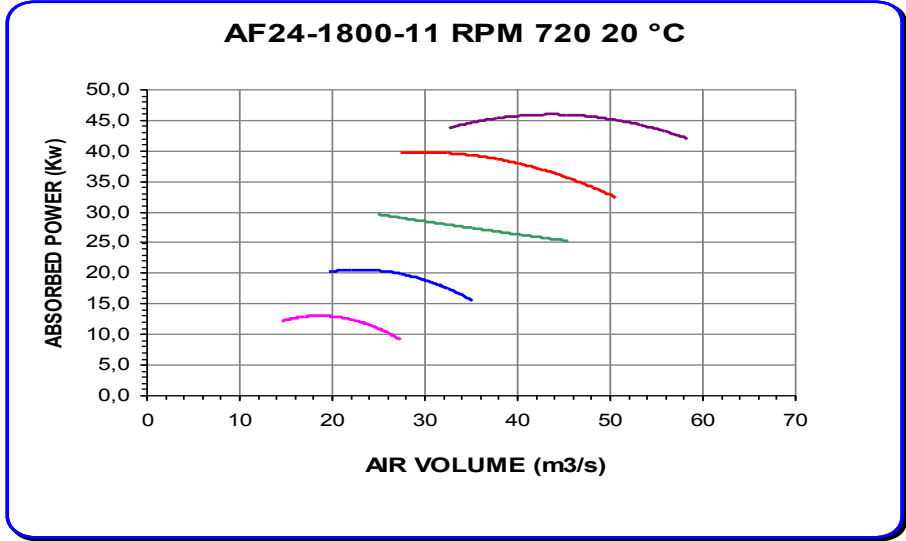
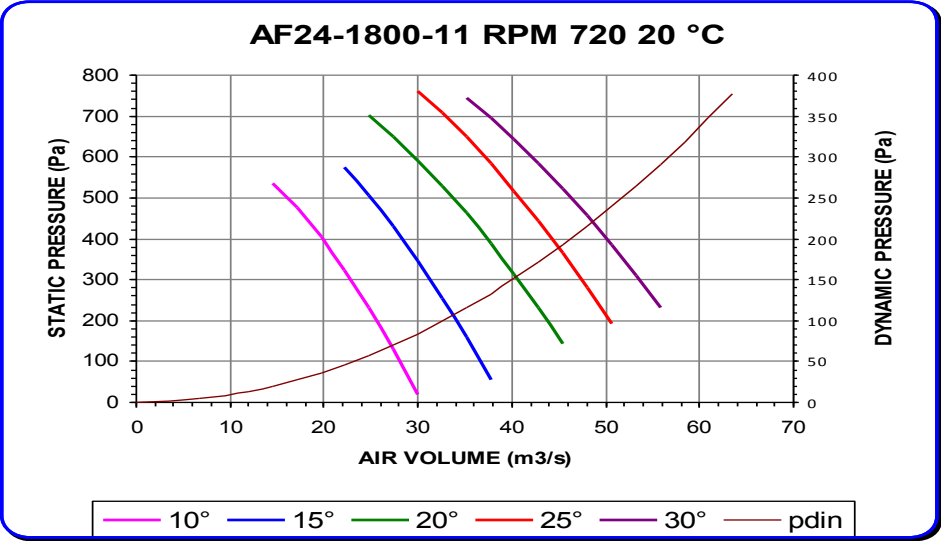
Noise spectrum referring to max efficiency of 20° curve
 Variation of +/- 3 db(A) on total range of performance



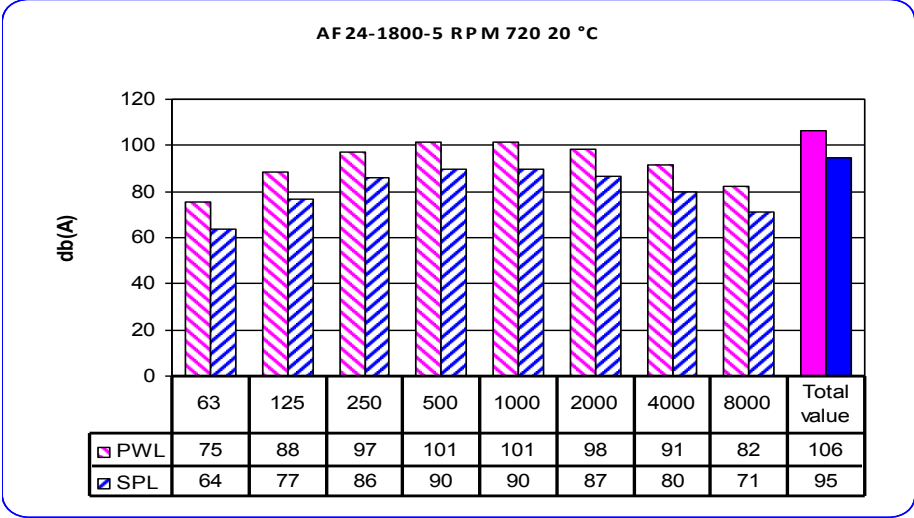
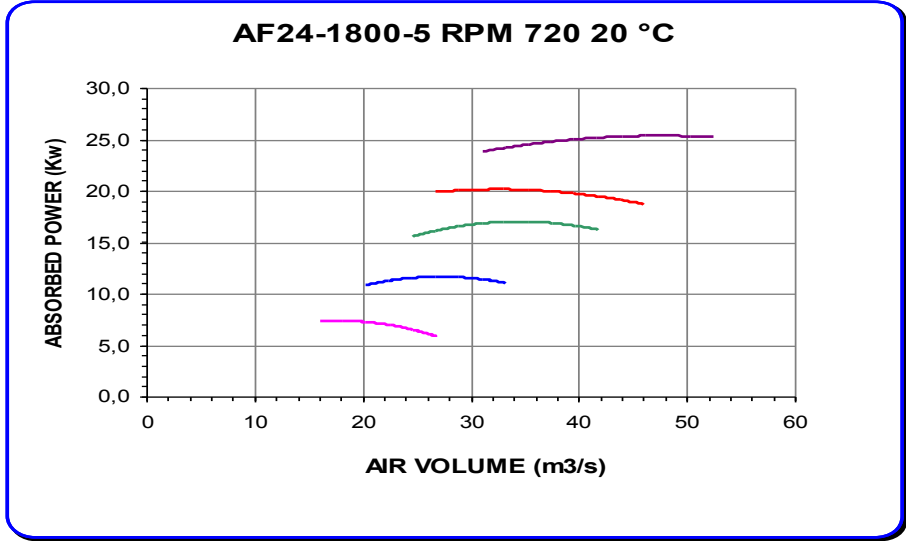
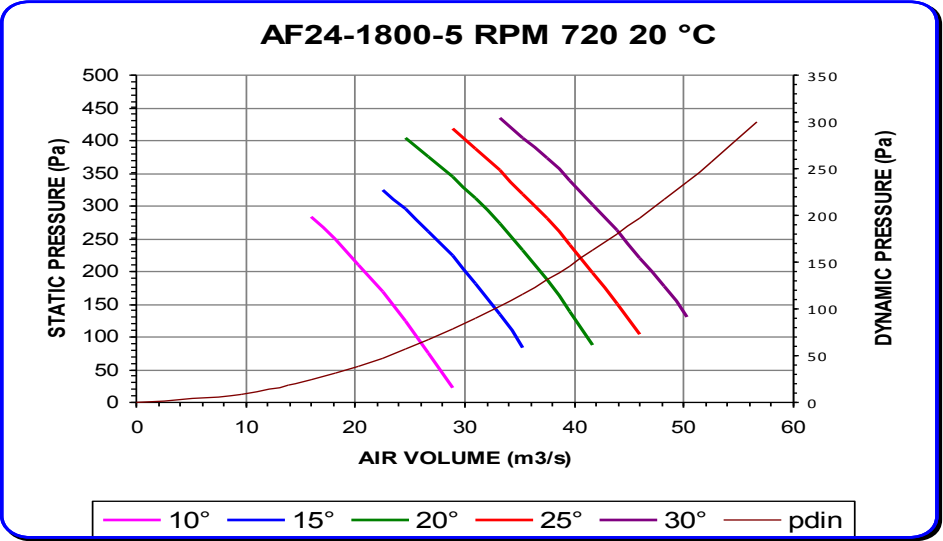
Noise spectrum referring to max efficiency of 20° curve
 Variation of +/- 3 db(A) on total range of performance



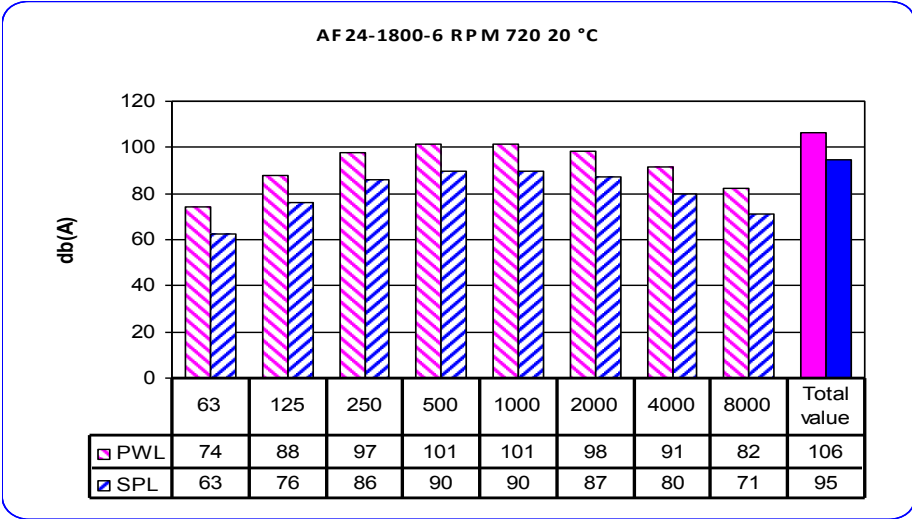
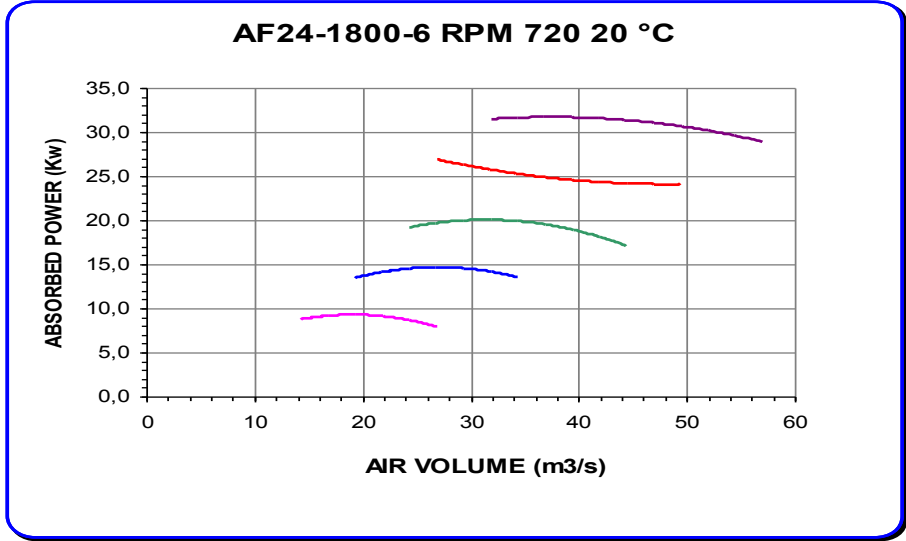
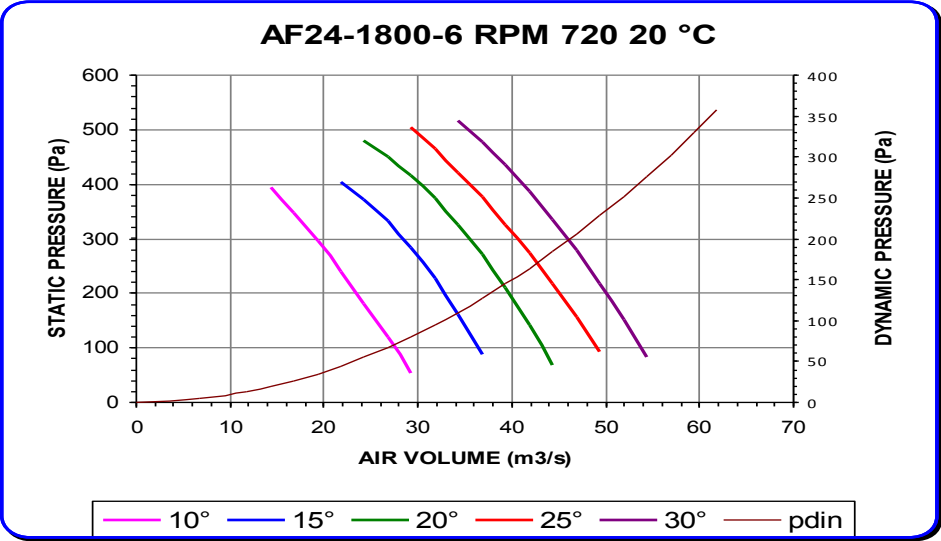
Noise spectrum referring to max efficiency of 20° curve
 Variation of +/- 3 db(A) on total range of performance



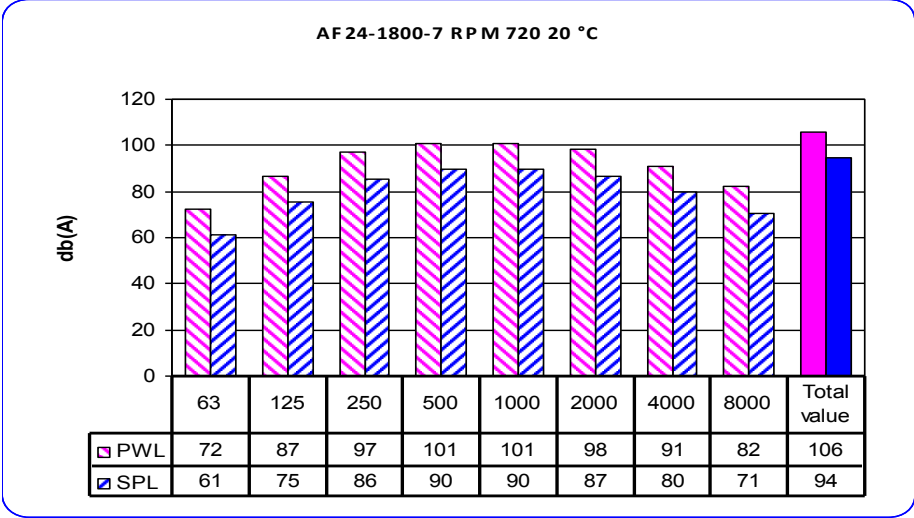
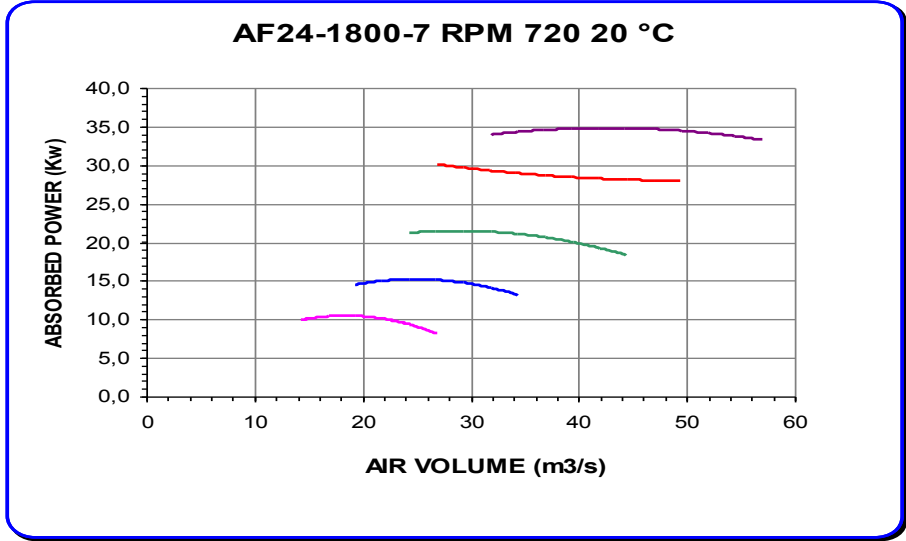
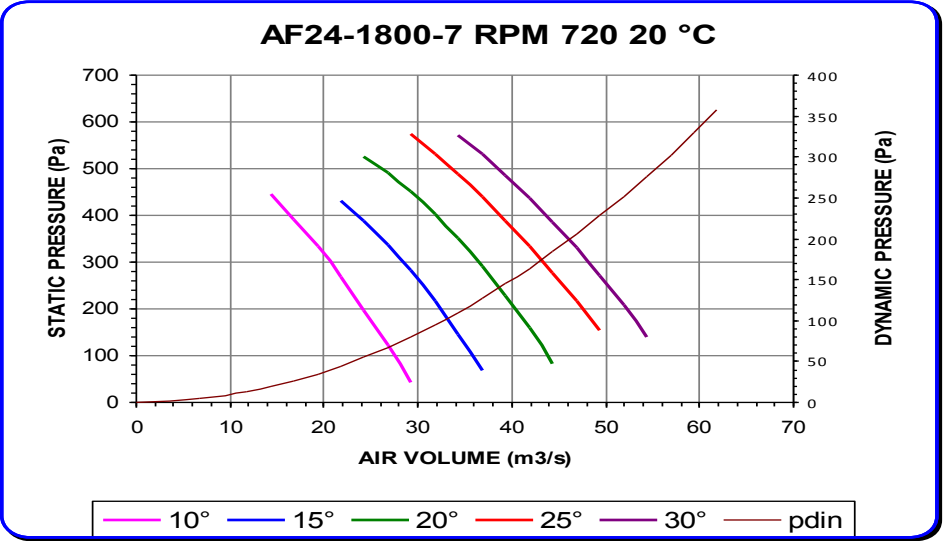
Noise spectrum referring to max efficiency of 20° curve
 Variation of +/- 3 db(A) on total range of performance



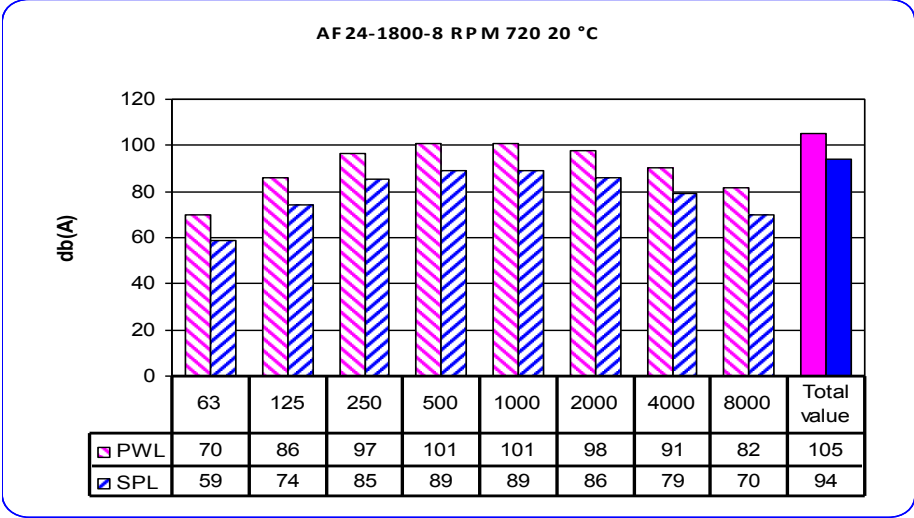
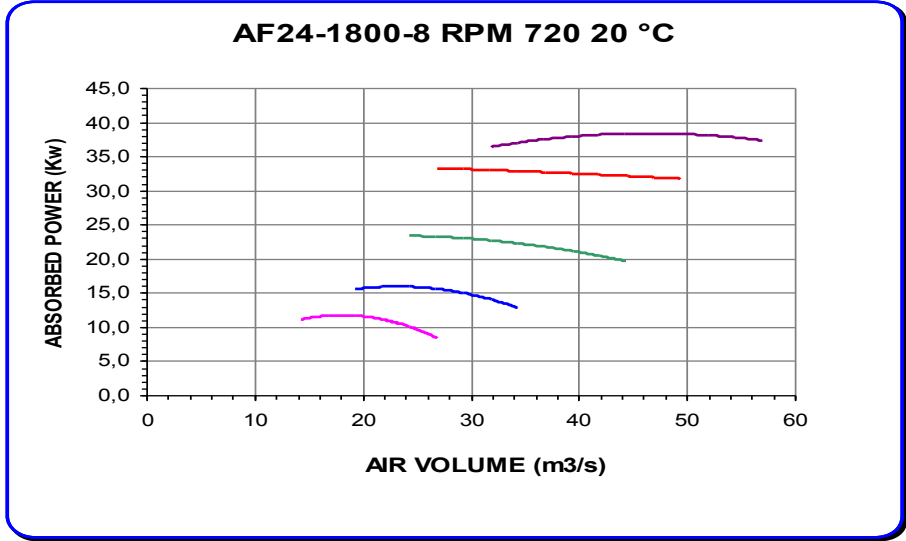
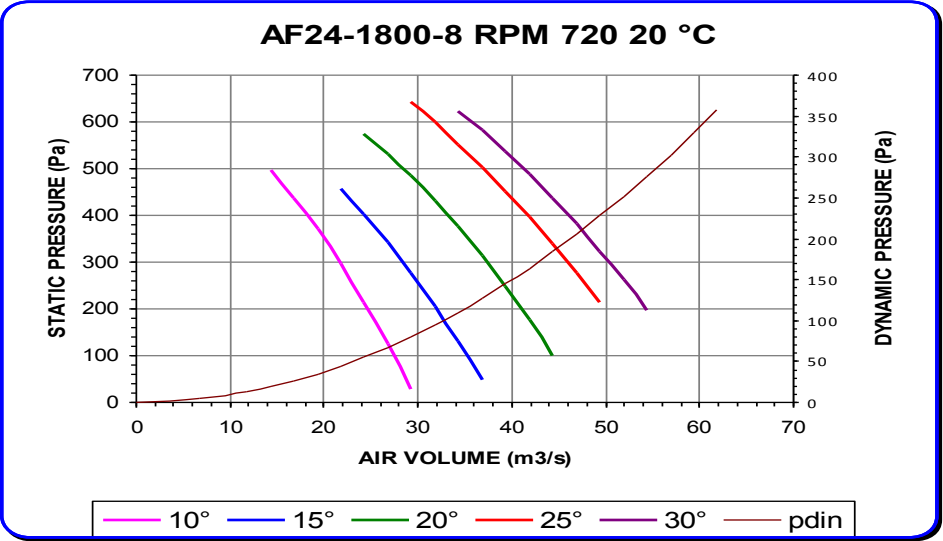
Noise spectrum referring to max efficiency of 20° curve
 Variation of +/- 3 db(A) on total range of performance



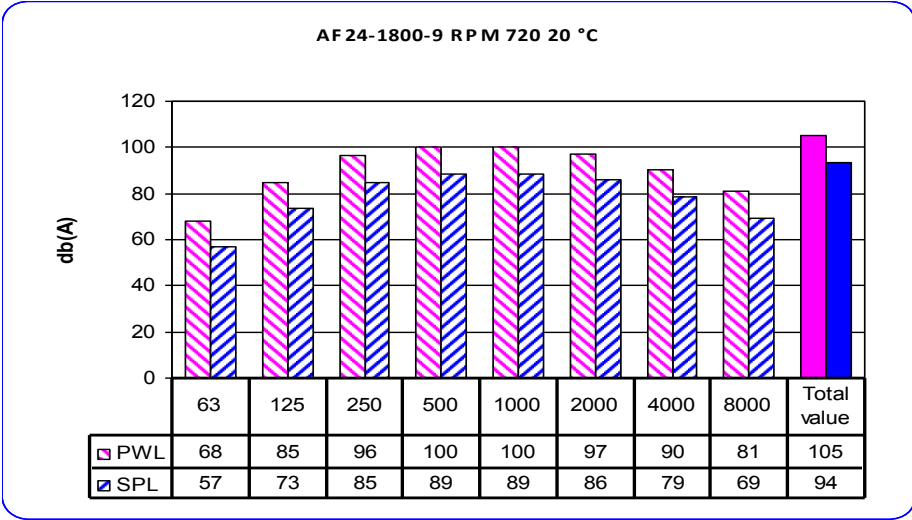
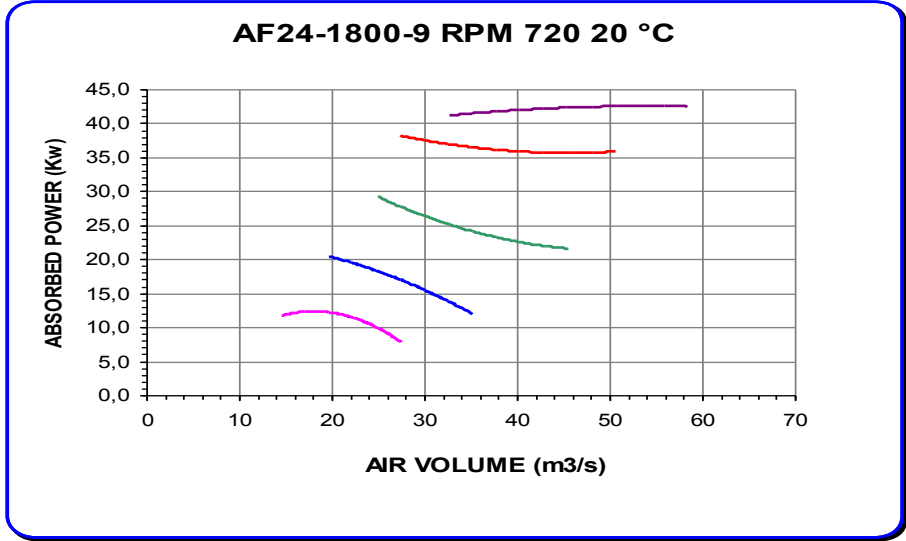
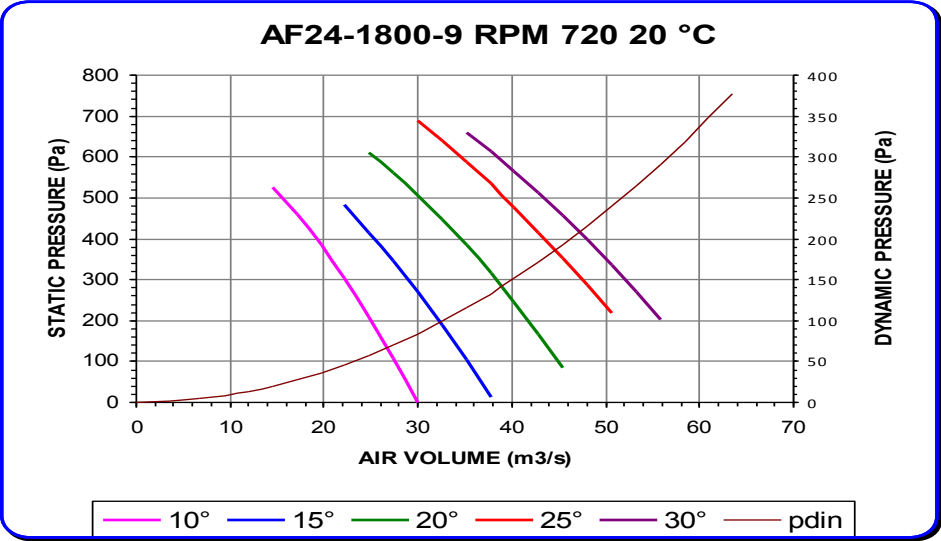
Noise spectrum referring to max efficiency of 20° curve
 Variation of +/- 3 db(A) on total range of performance



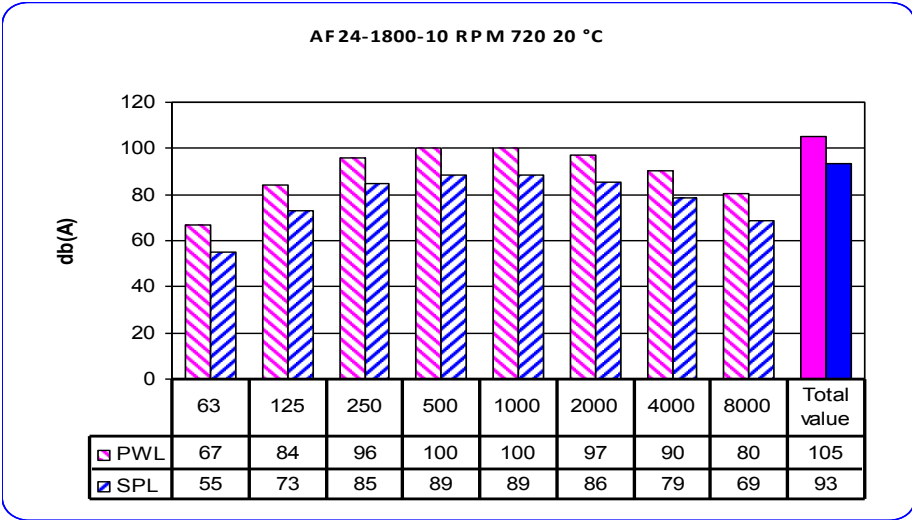
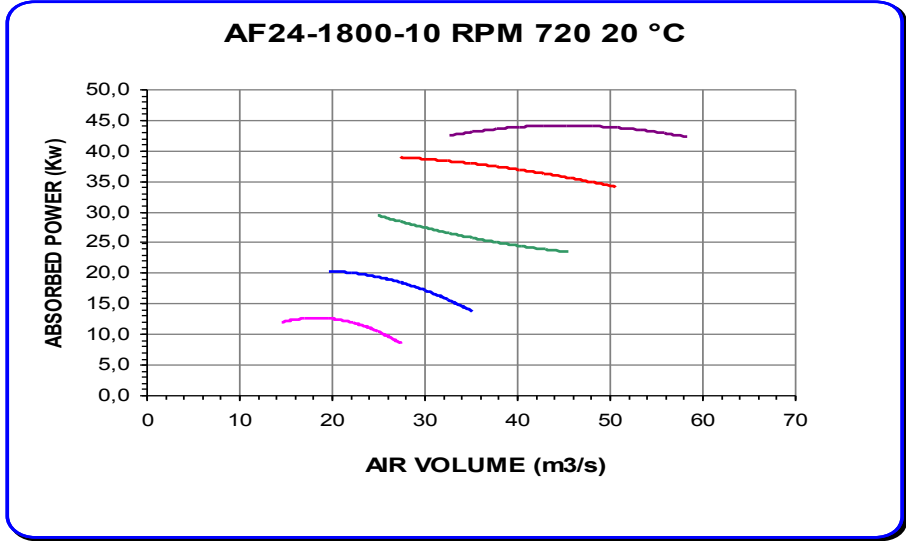
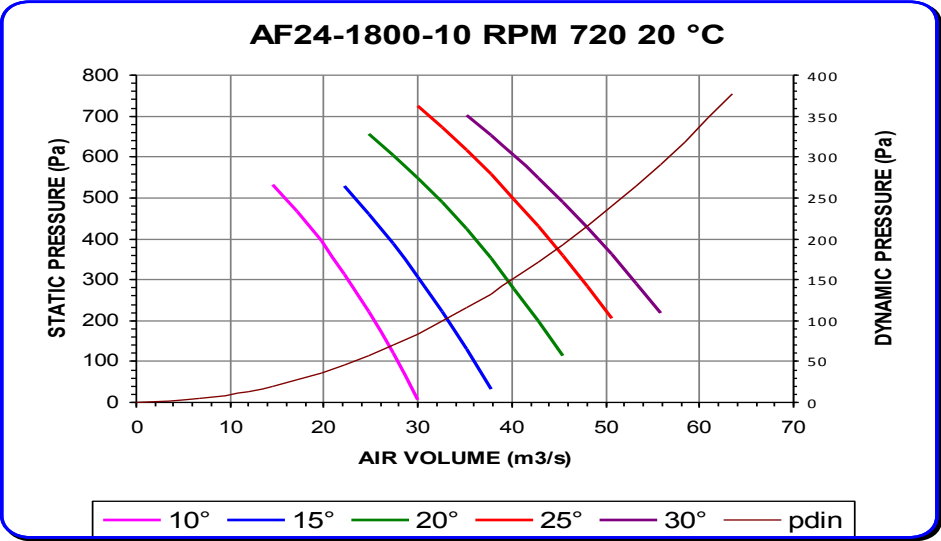
Noise spectrum referring to max efficiency of 20° curve
 Variation of +/- 3 db(A) on total range of performance



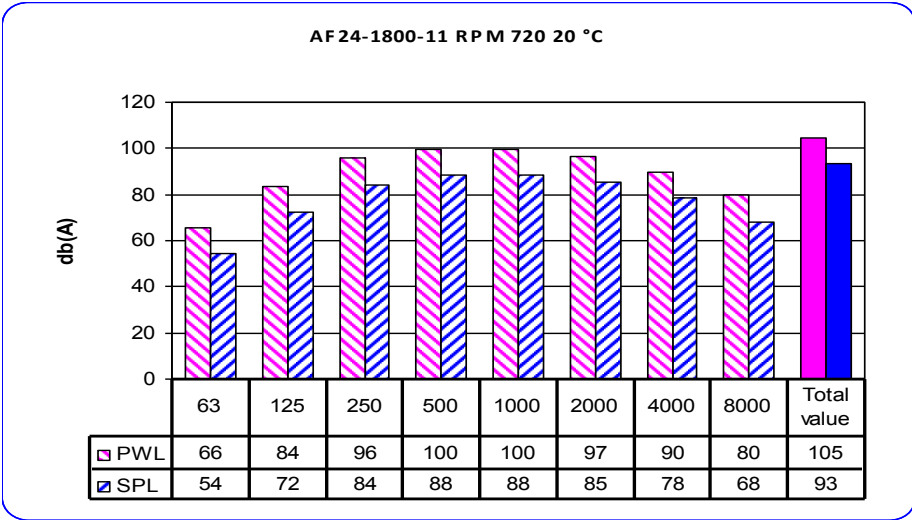
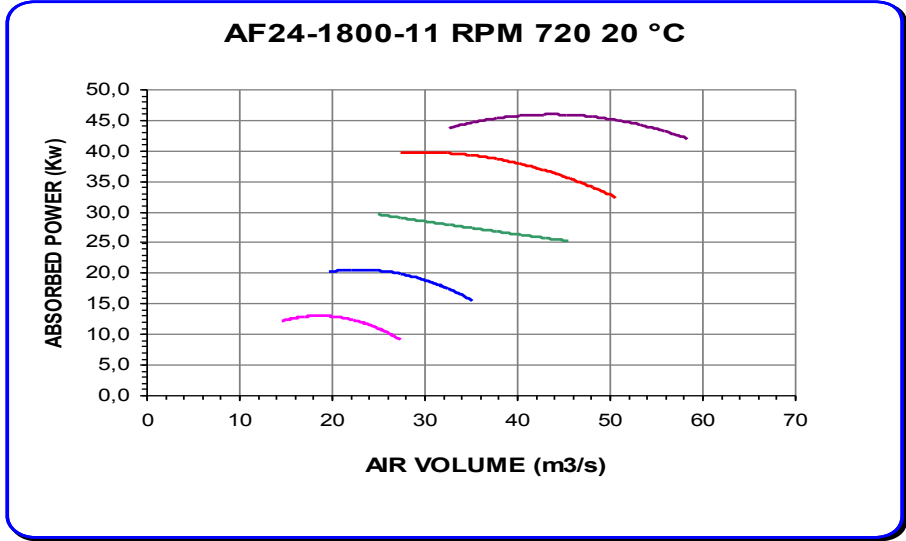
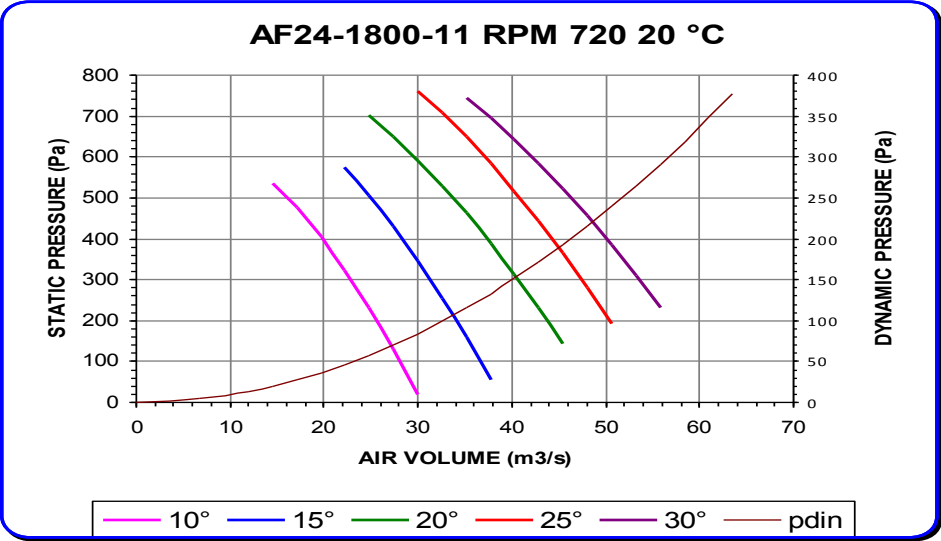
Noise spectrum referring to max efficiency of 20° curve
 Variation of +/- 3 db(A) on total range of performance



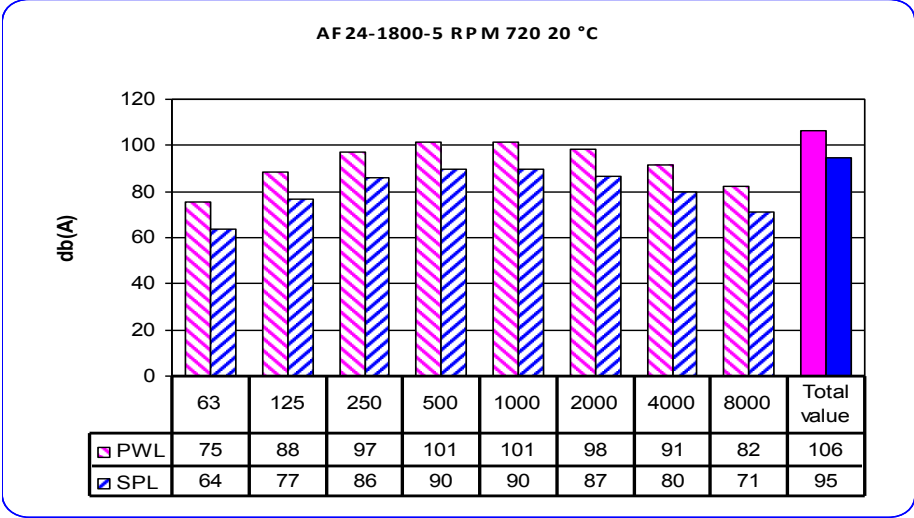
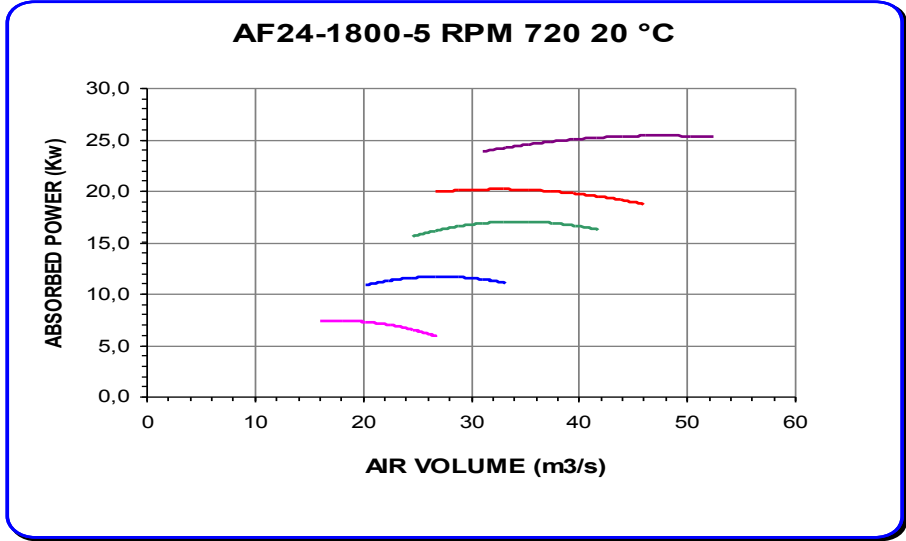
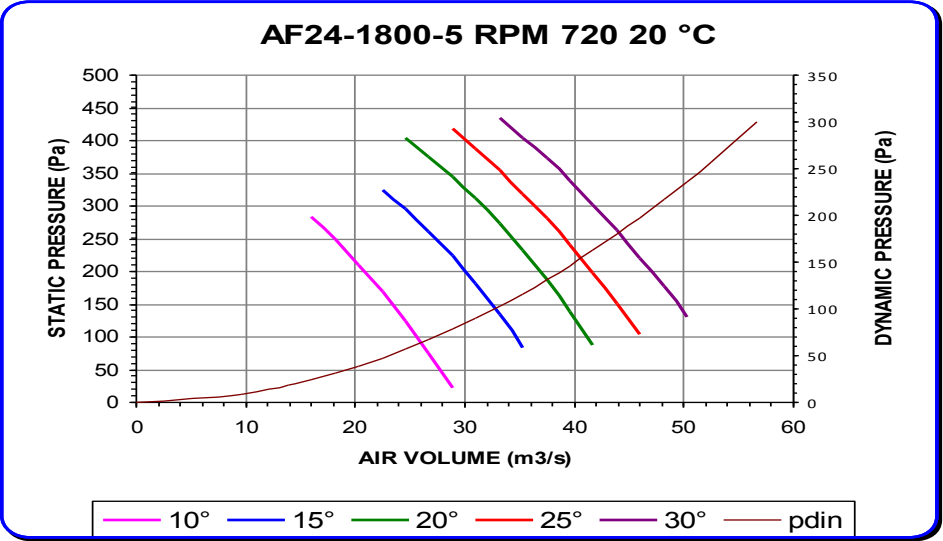
Noise spectrum referring to max efficiency of 20° curve
 Variation of +/- 3 db(A) on total range of performance



Noise spectrum referring to max efficiency of 20° curve
 Variation of +/- 3 db(A) on total range of performance



Noise spectrum referring to max efficiency of 20° curve
 Variation of +/- 3 db(A) on total range of performance



Noise spectrum referring to max efficiency of 20° curve
 Variation of +/- 3 db(A) on total range of performance