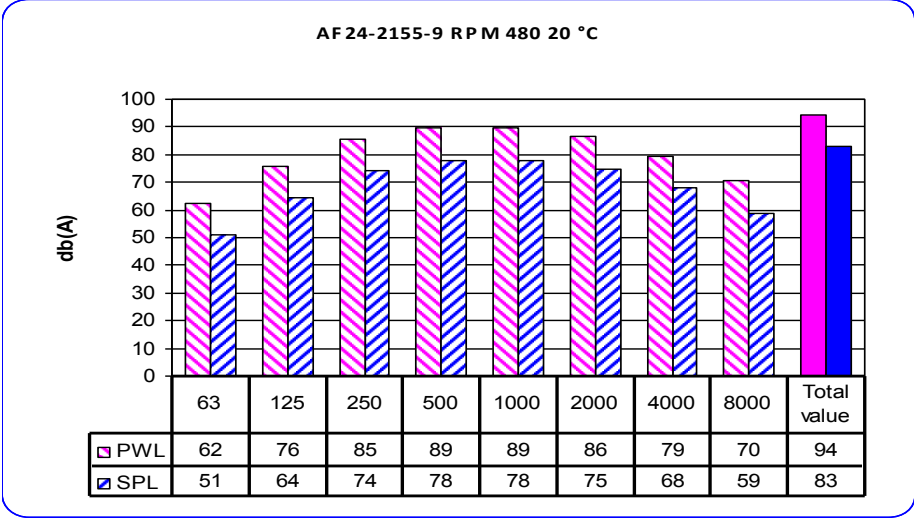
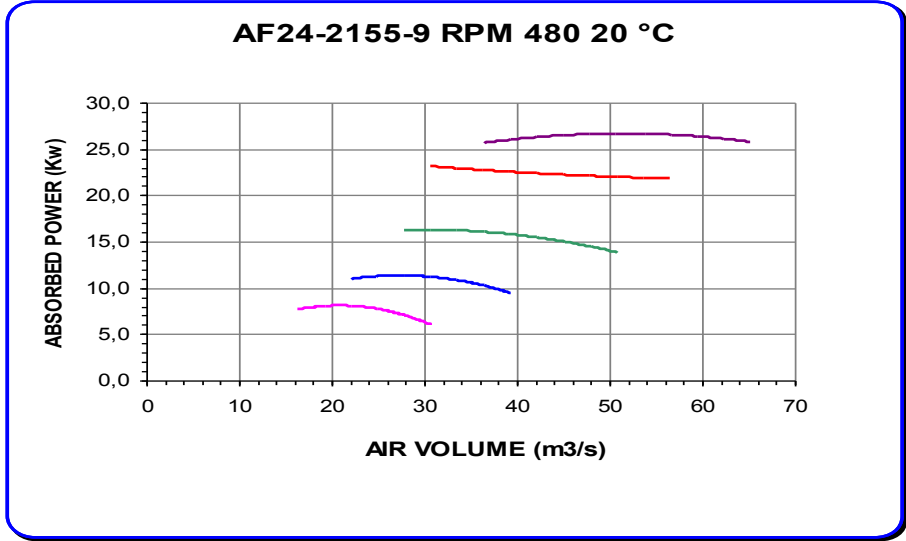
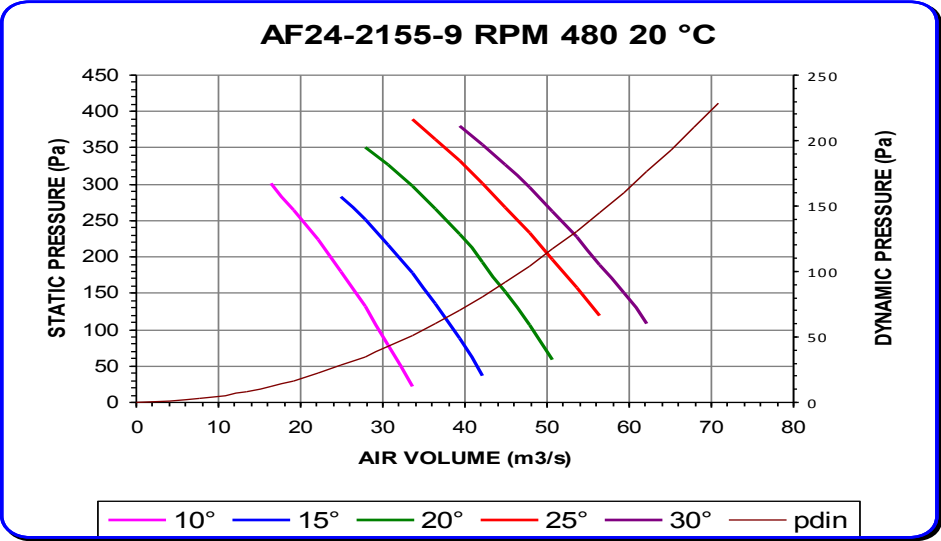
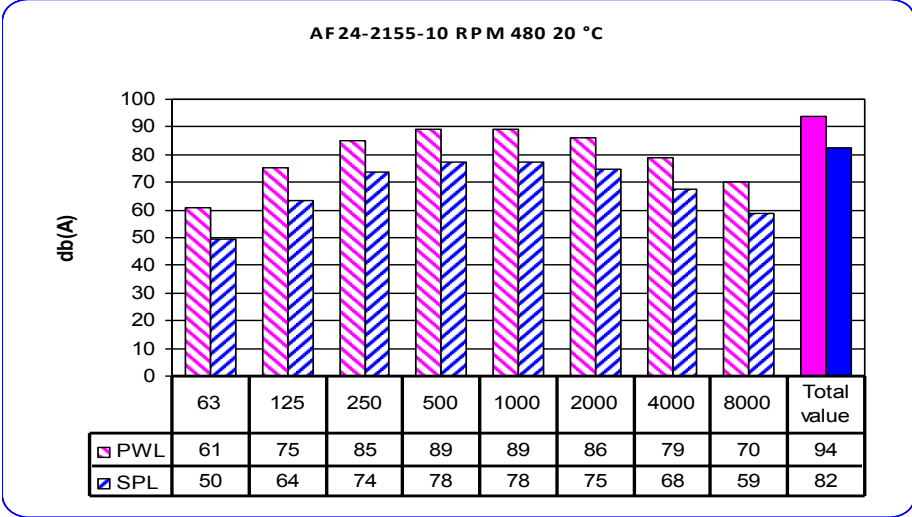
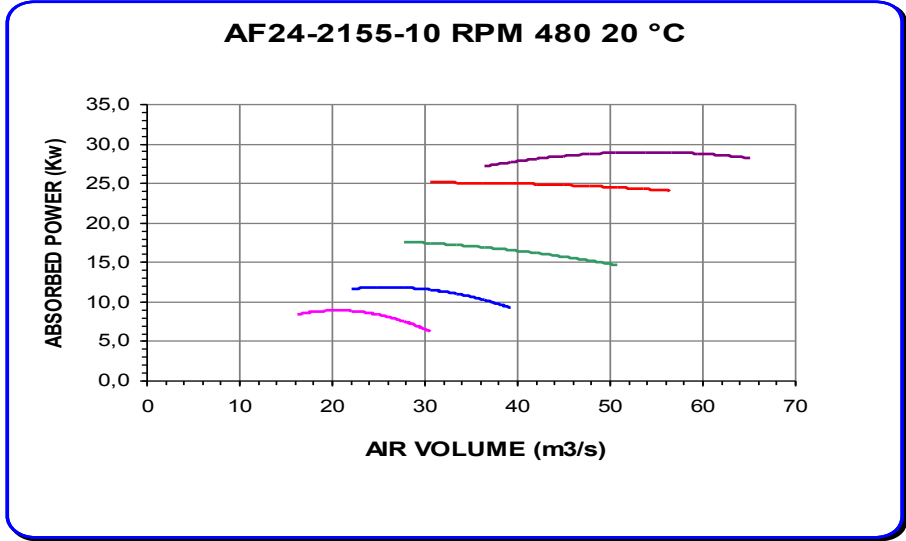
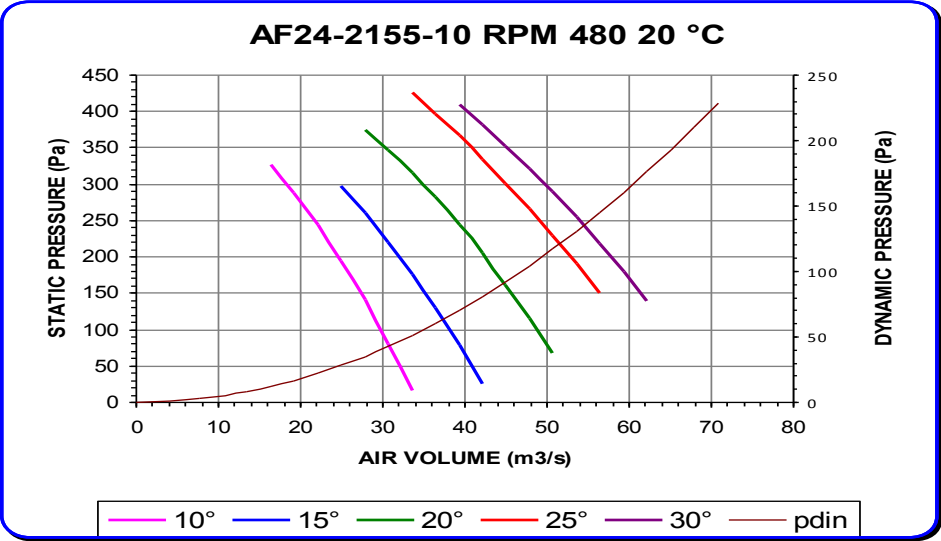


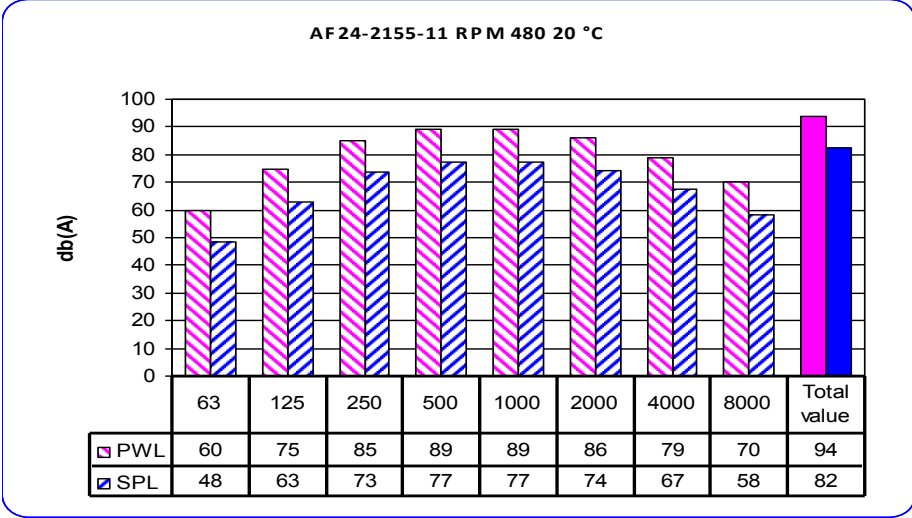
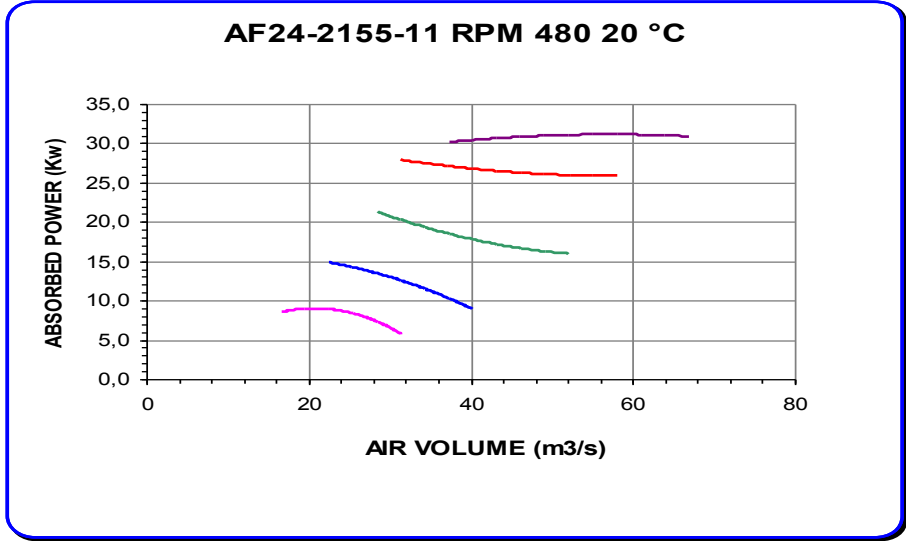
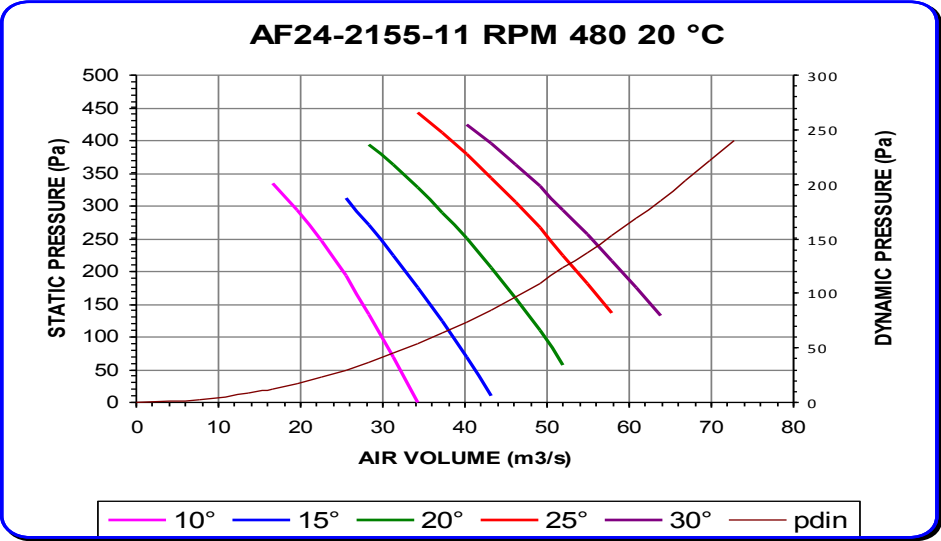
Noise spectrum referring to max efficiency of 20° curve
 Variation of +/- 3 db(A) on total range of performance



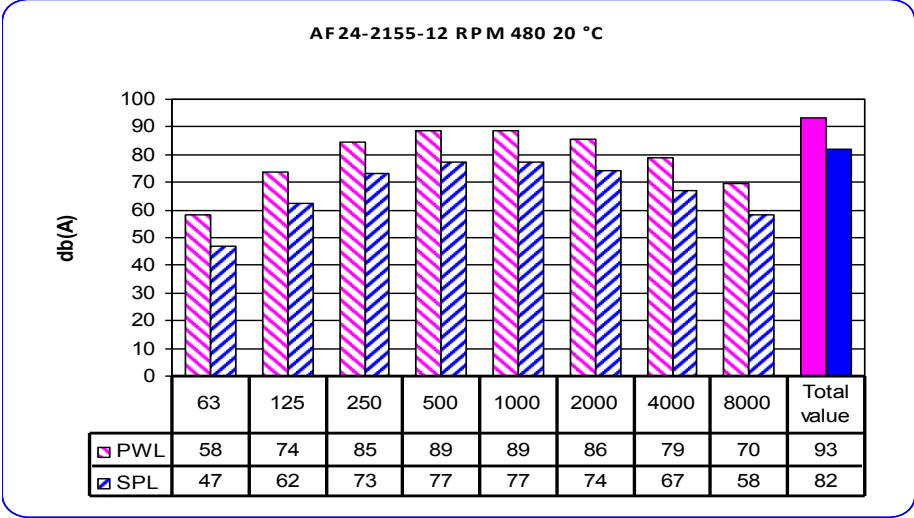
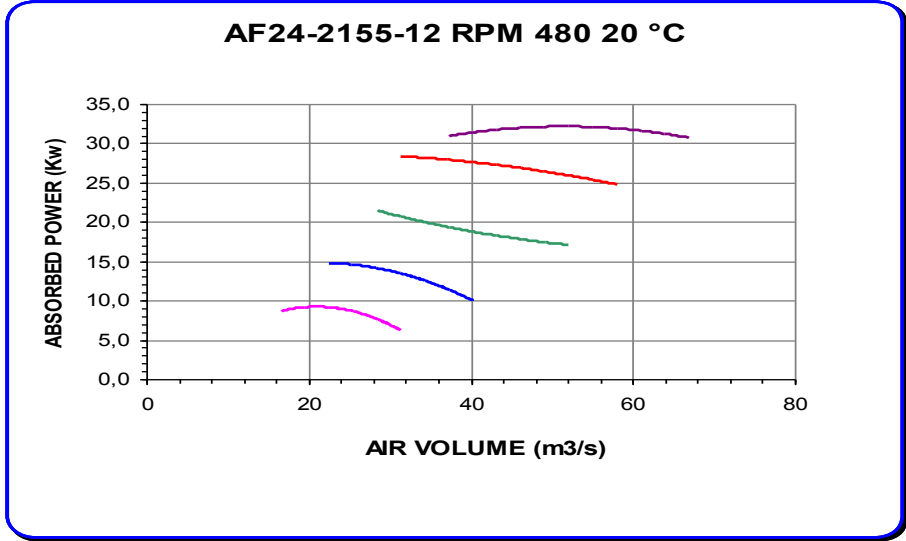
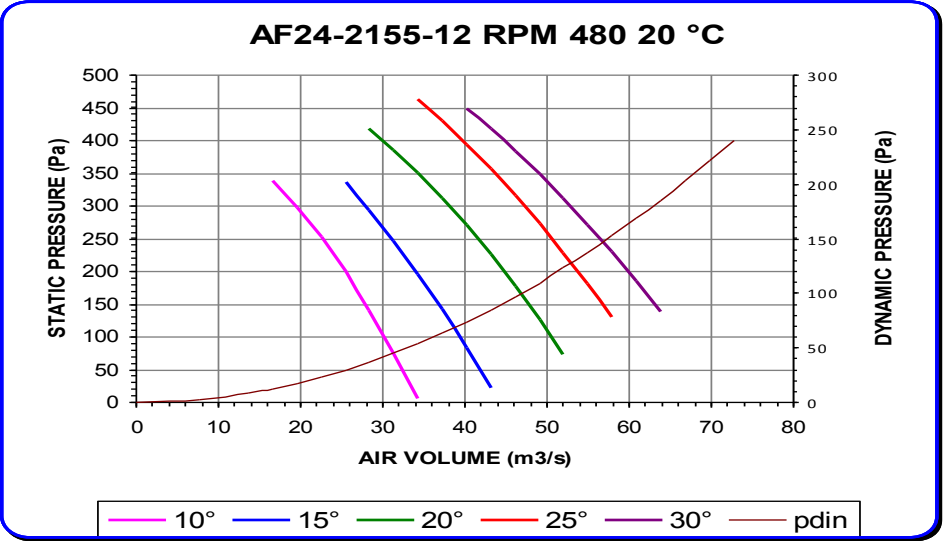
Noise spectrum referring to max efficiency of 20° curve
 Variation of +/- 3 db(A) on total range of performance



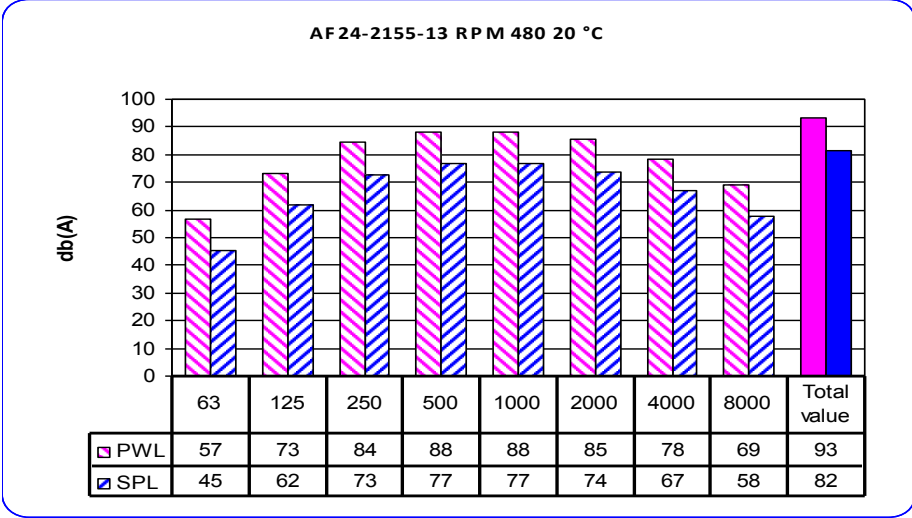
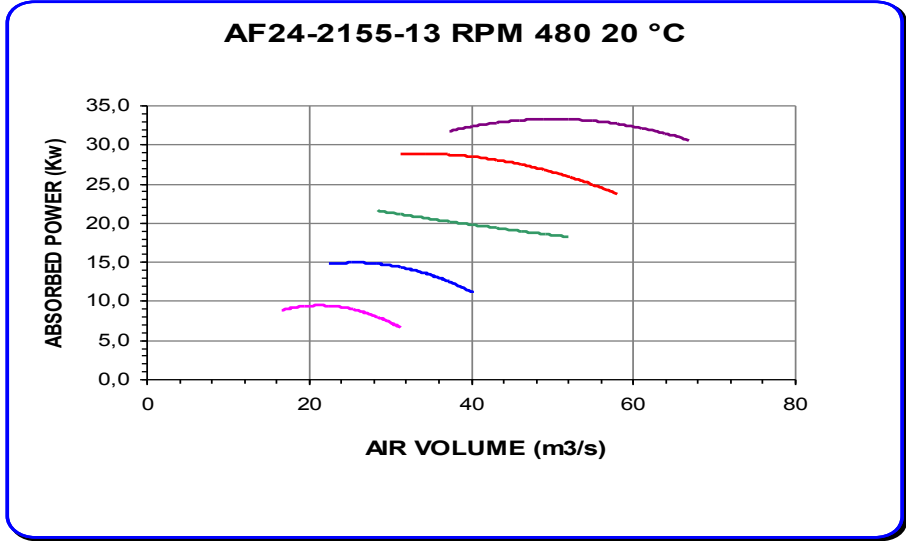
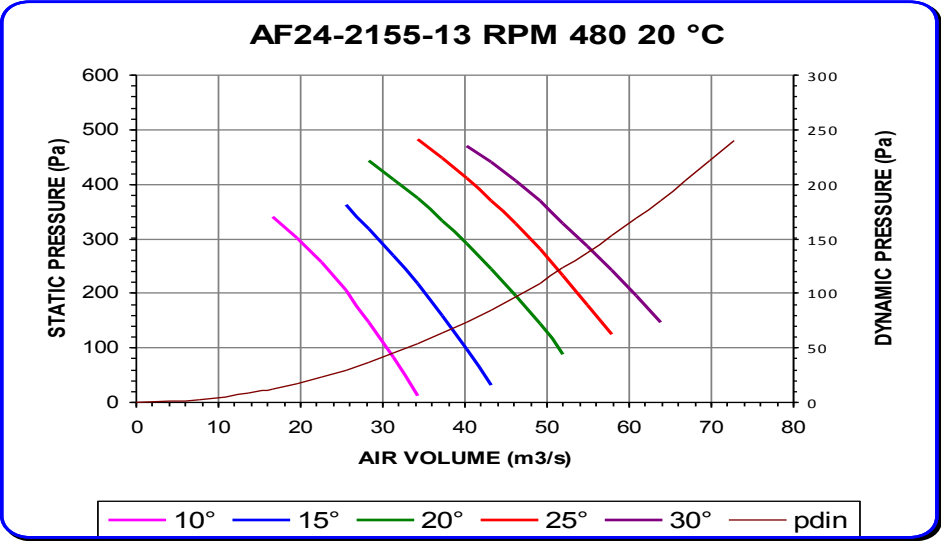
Noise spectrum referring to max efficiency of 20° curve
 Variation of +/- 3 db(A) on total range of performance



Noise spectrum referring to max efficiency of 20° curve
 Variation of +/- 3 db(A) on total range of performance

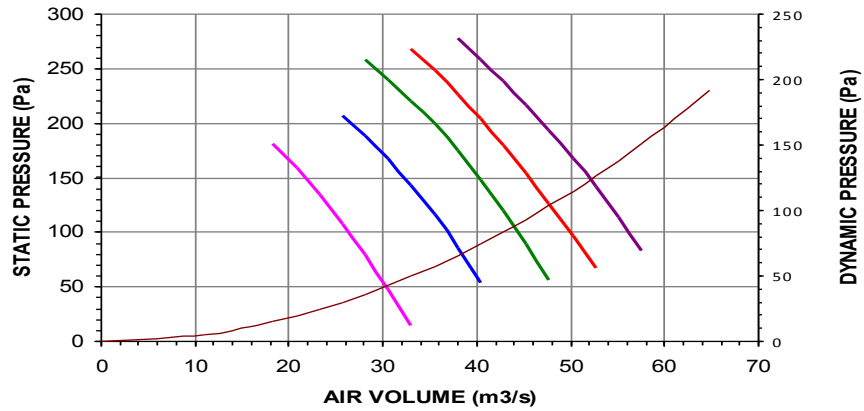


Noise spectrum referring to max efficiency of 20° curve
 Variation of +/- 3 db(A) on total range of performance



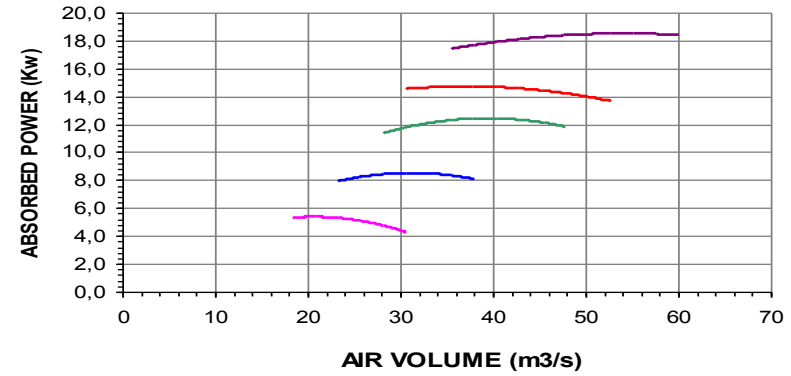
Noise spectrum referring to max efficiency of 20° curve
 Variation of +/- 3 db(A) on total range of performance

AF24-2155-6 RPM 480 20 °C

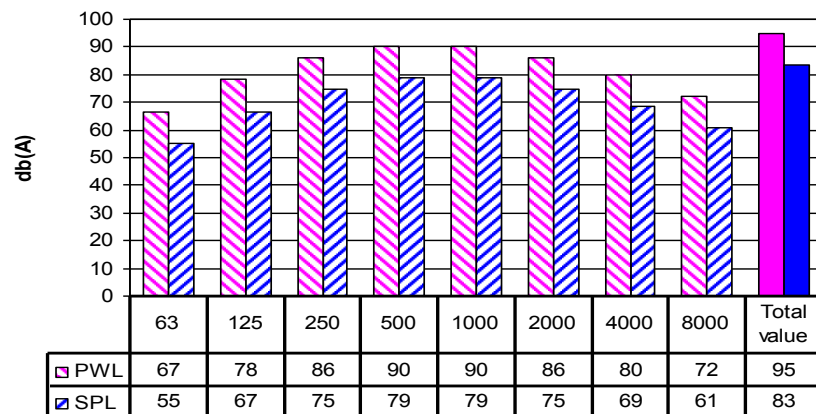


10° 15° 20° 25° 30° pdin

AF24-2155-6 RPM 480 20 °C



AF24-2155-6 RPM 480 20 °C



Noise spectrum referring to max efficiency of 20° curve
Variation of +/- 3 db(A) on total range of performance