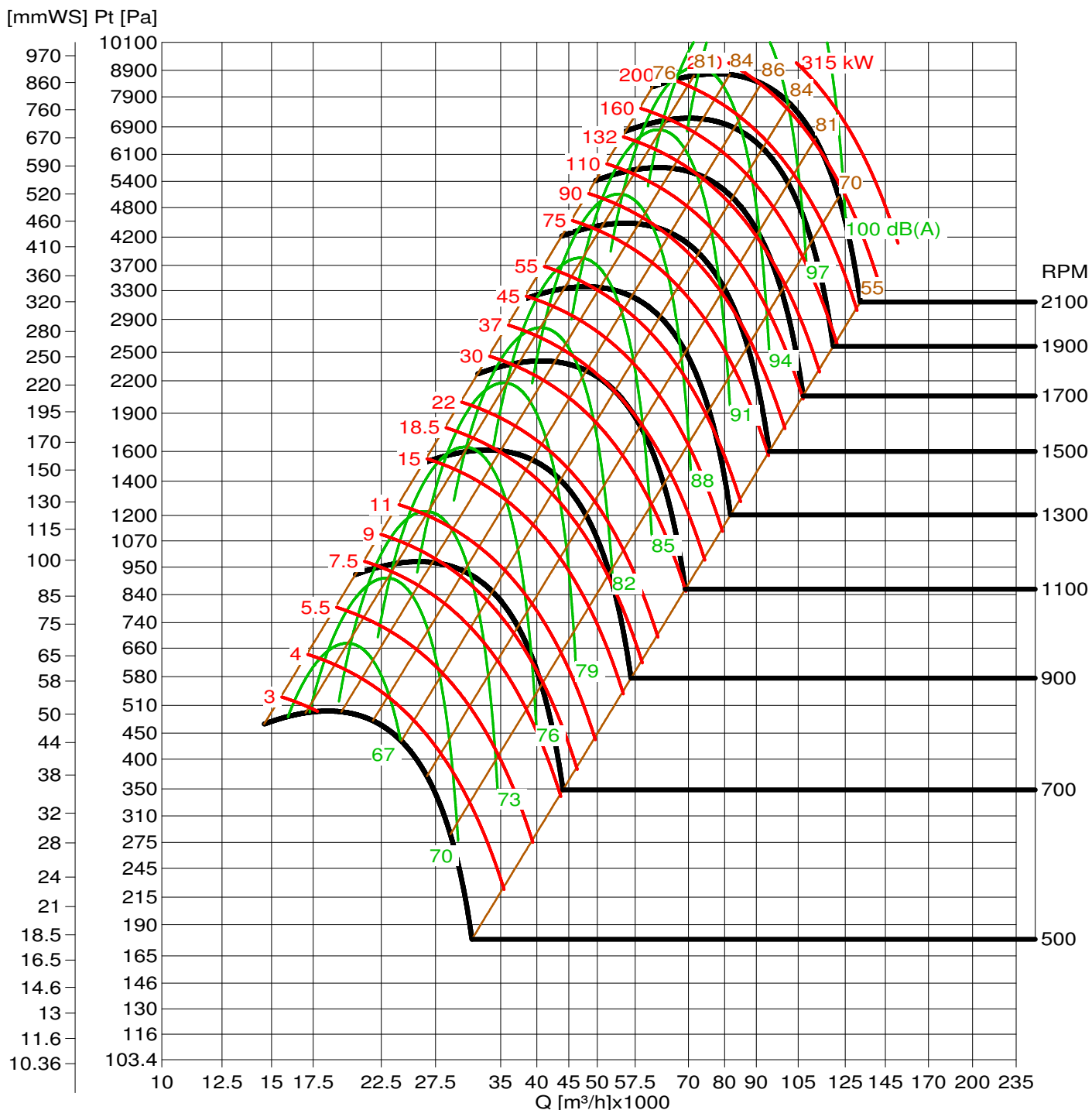


GTG Gebläsetechnik GmbH

www.gtg.at

Projekt :	Datum :	10.03.2015
Ventilatorart :	PHR 1120	Dichte :
		1.171 kg/m ³



Q [m³/s]	3	3.4	4.2	5	5.8	6.6	7.8	9	10.2	12.2	14.6	17	19	21.8	25	28.6	33	37	41	47	53	59	67		
v [m/s]	4	4.5	5	5.5	6.5	7.5	8.5	14	19	24	29	34	39	44	49	59	69								
Pd [Pa]	6	7	8	9	11	14	18	24	30	38	48	60	74	92	118	158	212	284	380	510	684	916	1282	1872	2732
Pd [mmWS]	0.66	0.9	1.2	1.62	2.28	3.36	4.8	6.72	9	11.4	15	19.8	27	35.4	48	60	75	93	120	162	219	294			