

GTG Gebläsetechnik GmbH

www.gtg.at

Projekt :

Datum :

11.03.2015

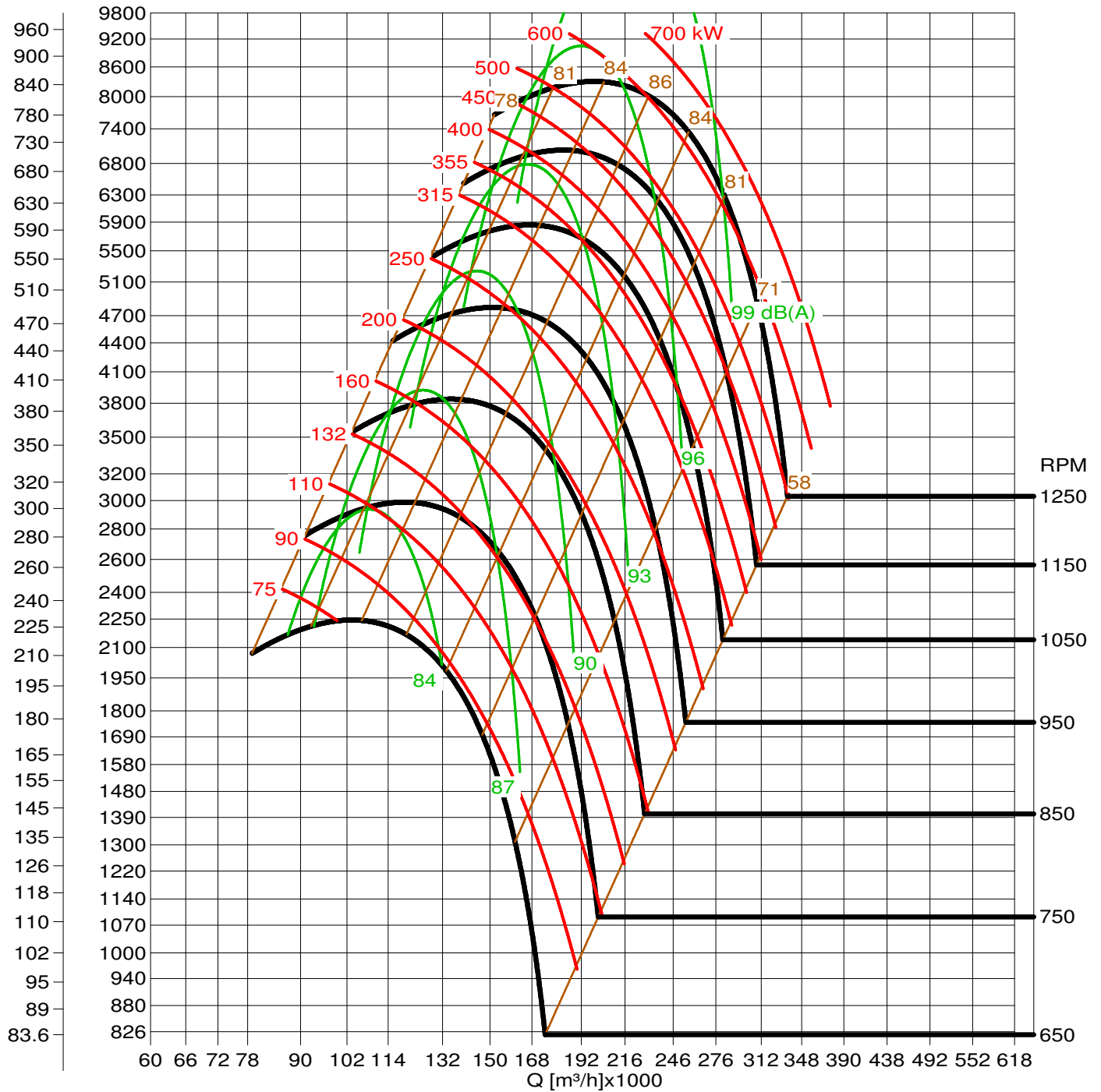
Ventilatorart :

PHR 1800

Dichte :

1.171 kg/m³

[mmWS] Pt [Pa]



Q [m³/s]

17.9 20.6 23.3 26 29.6 34.1 38.6 44 49.4 56.6 64.7 73.7 83.6 95.3 107 122.3 143 161

v [m/s]

9 9.8 11 12.2 17 21 25 29 33 37 41 45 49 53 61 69 77

Pd [Pa]

32 38 46 54 64 76 90 108 134 166 206 256 318 394 488 606 752 932 1192 1576 2082 2750

Pd [mmWS]

3.3 4.1 5.1 6 6.9 8.4 10.5 13.5 17.4 22.5 28.8 36 42 51 60 72 84 99 120 150 186 231 288 357