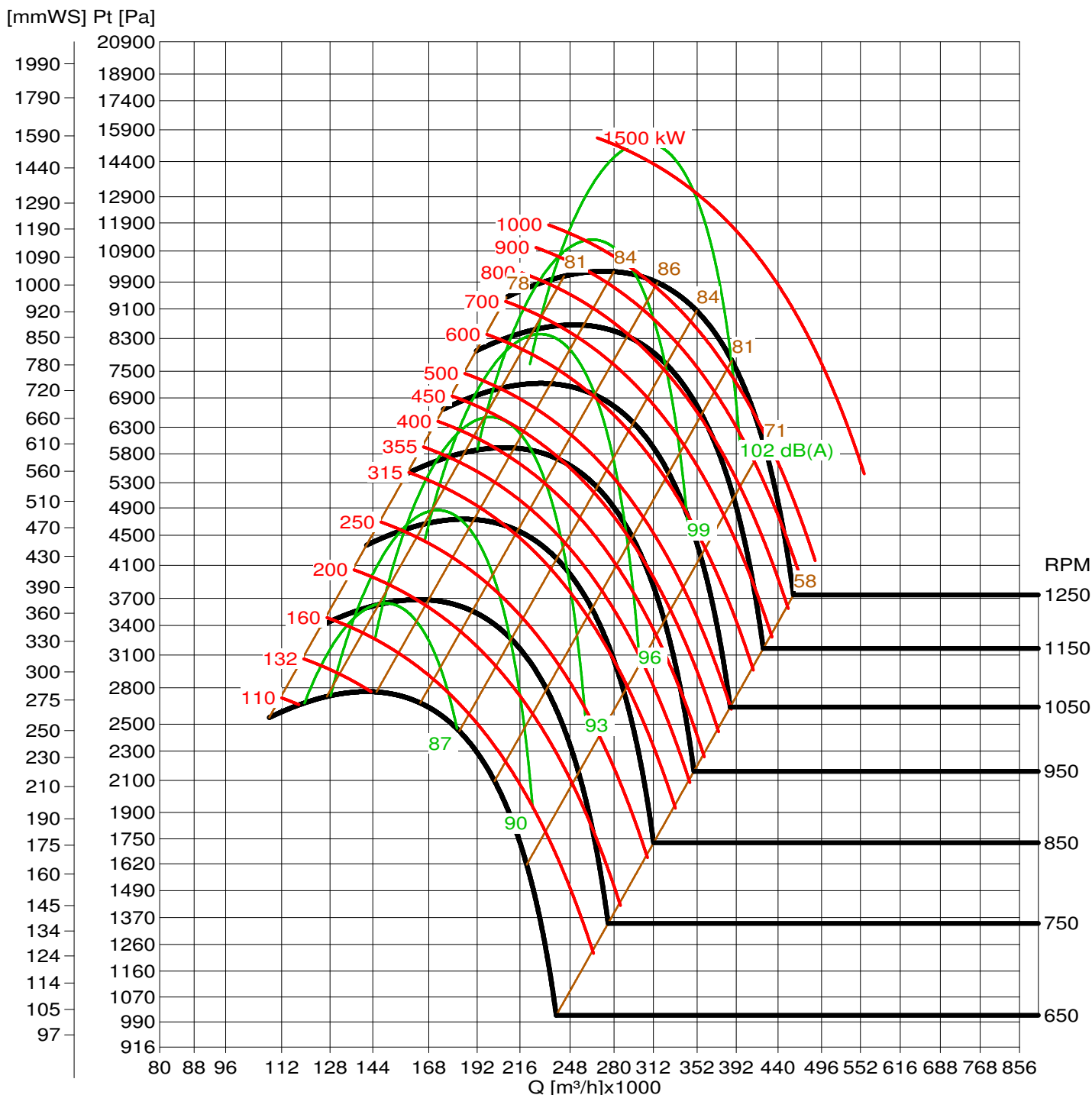


# GTG Gebläsetechnik GmbH

www.gtg.at

<b>Projekt :</b>	<b>Datum :</b>	11.03.2015
<b>Ventilator type :</b>	<b>PHR 2000</b>	<b>Dichte :</b>
		<b>1.171 kg/m<sup>3</sup></b>



Q [m³/s]	25	28	31	34	37	40	44.5	50.5	58	64	70	76	82	91	100	112	127	142	160	178	199	223	
v [m/s]	10	11	12	13	14.5	20	25	30	35	40	45	50	55	60	65	75							
Pd [Pa]	38	46	54	64	76	90	108	134	166	206	256	318	394	488	606	750	930	1190	1572	2076	2744	3628	
Pd [mmWS]	3.9	4.8	5.97	7.5	9	10.8	14.1	18.21	25.8	33	39.4	47.7	60	72	84	99	120	150	186	231	288	357	