

GTG Gebläsetechnik GmbH

www.gtg.at

Projekt :

Datum :

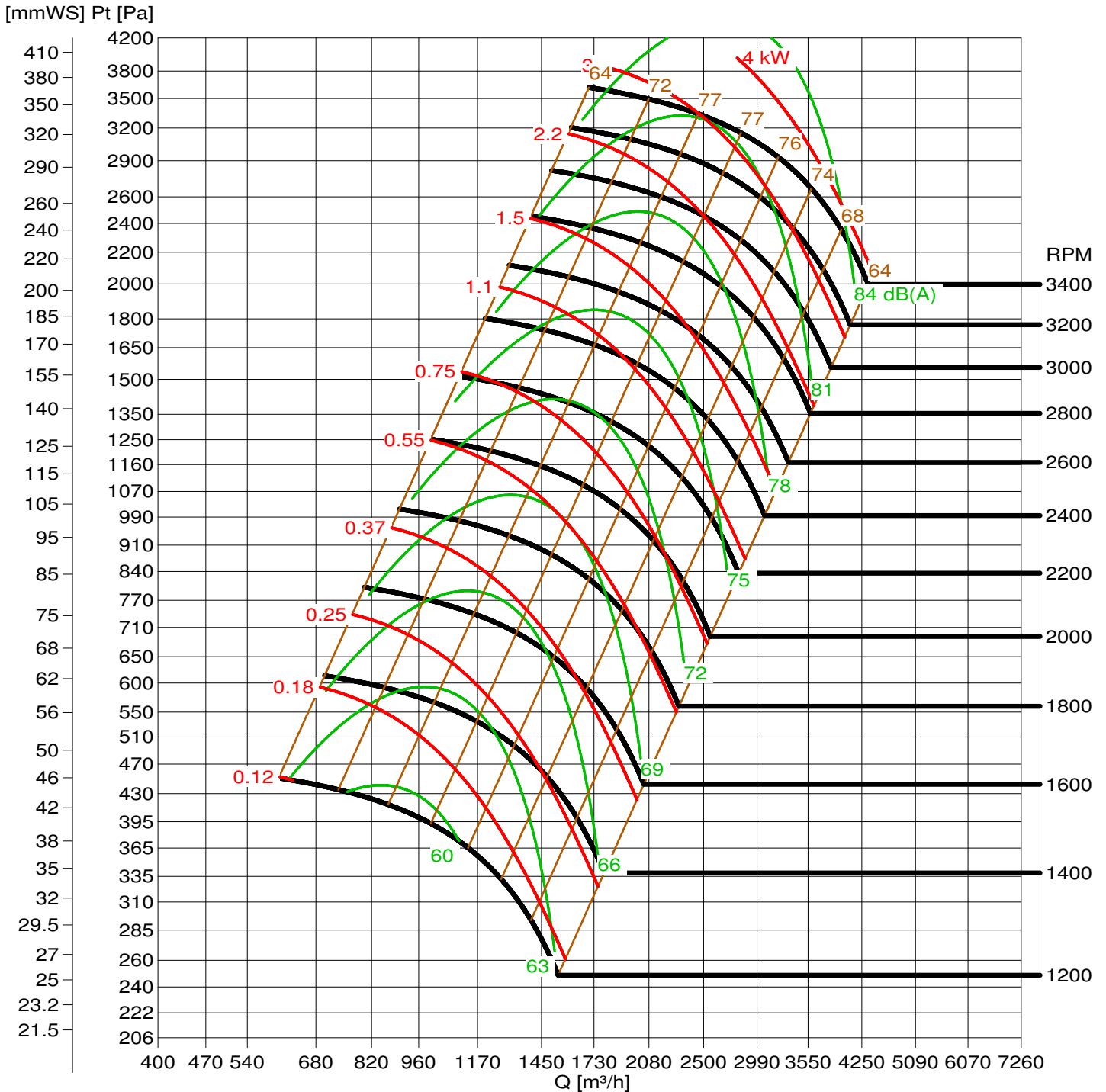
11.03.2015

Ventilatorart :

T 9.10 S7

Dichte :

1.171 kg/m³



Q [m³/s]	0.122	0.158	0.194	0.23	0.278	0.338	0.41	0.494	0.59	0.71	0.83	0.986	1.19	1.418	1.718										
v [m/s]	2	2.2	2.6	3	3.4	3.8	6	8	10	12	14	16	18	20	22	26	30	34							
Pd [Pa]	2.58	3.6	4.5	5.7	7.2	9	11.1	15	18	23.1	30	36	45	54	66	81	99	126	165	216	282	366	477	621	
Pd [mmWS]	0.276	0.4	0.5	0.66	0.9	1.18	1.6	2	2.4	3	3.6	4.5	5.7	7	8	9	11	14	17	21	26	32	39	47	57