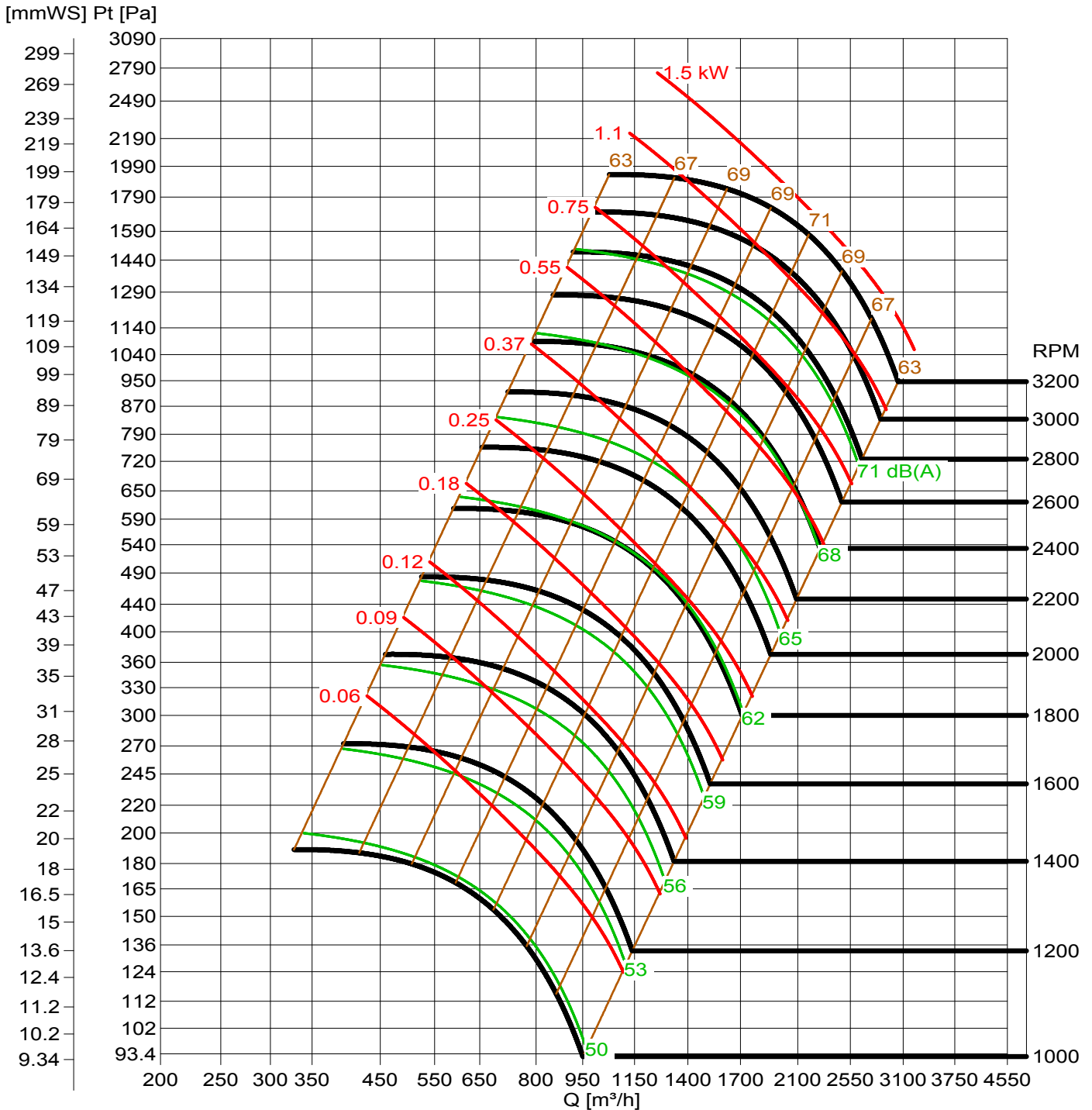


# GTG Gebläsetechnik GmbH

www.gtg.at

Projekt : Datum : 31.10.2013

Ventilatorart : **TRM 310** Dichte : **1.176 kg/m<sup>3</sup>**



Q [m³/s]	0.06	0.076	0.1	0.124	0.156	0.196	0.244	0.3	0.356	0.444	0.54	0.66	0.804	0.98	1.18	1.42							
v [m/s]	1.4	1.6	2.2	2.6	3	5	7	9	11	13	15	17	19	23	27								
Pd [Pa]	0.9	1.2	1.62	2.28	3.36	4.8	6.72	9	11.4	15	19.8	27	35.4	48	60	75	93	120	162	219	294	396	531
Pd [mmWS]	0.1	0.14	0.2	0.28	0.4	0.54	0.76	1.12	1.6	2.24	3.36	4.7	6	7.89	11	14	18	23	29	36	45		